

**Mineral Exploration & Development  
Lawyer's Gold & Silver Project  
Golden Triangle of British Columbia, Canada  
Targeting 2 million oz gold & 20 million oz silver**



## Forward Looking Statements:

Certain statements and/or graphics in the Company's press releases, web site information and corporate displays, among others, constitute "forward-looking statements". These statements are based on information currently available to the Company and the Company provides no assurance that actual results will meet management's expectations. Forward-looking statements include estimates and statements that describe the Company's future plans, objectives or goals, including words to the effect that the Company or management expects a stated condition or result to occur. Forward-looking statements may be identified by terms such as "believes", "anticipates", "expects", "estimates", "may", "could", "would", "will", or "plan", or their conditional or future forms. Since forward-looking statements are based on assumptions and address future events and conditions, by their very nature they involve inherent risks and uncertainties.

Actual results relating to, among other things, results of exploration, project development, reclamation and capital costs of the Company's mineral properties, and the Company's financial condition and prospects, could differ materially from those currently anticipated in such statements for many reasons such as: changes in general economic conditions and conditions in the financial markets; changes in demand and prices for minerals; litigation, legislative, environmental and other judicial, regulatory, political and competitive developments; technological and operational difficulties encountered in connection with the activities of the Company; and other matters discussed in this presentation. This list is not exhaustive of the factors that may affect any of the Company's forward-looking statements. These and other factors should be considered carefully and readers should not place undue reliance on the Company's forward-looking statements. The Company does not undertake to update any forward looking statement that may be made from time to time by the Company or on its behalf, except if required to do so by applicable securities laws. You are cautioned not to place any undue reliance on any forward-looking statement.

## Forward Looking Statements or Information Related to Exploration:

Relating to exploration, the identification of exploration targets and any implied future investigation of such targets on the basis of specific geological, geochemical and geophysical evidence or trends are future-looking and subject to a variety of possible outcomes which may or may not include the discovery, or extension, or termination of mineralization. Further, areas around known mineralized intersections or surface showings may be marked by wording such as "open", "untested", "possible extension" or "exploration potential" or by symbols such as "?". Such wording or symbols should not be construed as a certainty that mineralization continues or that the character of mineralization (e.g. grade or thickness) will remain consistent from a known and measured data point. The key risks related to exploration in general are that chances of identifying economical reserves are extremely small.

The presentation contains historical exploration data that have not been verified by Benchmark Metals Inc. and may not be accurate or complete, and therefore the information should not be relied upon.

Michael Dufresne, M.Sc., P.Geol., P.Geo., an independent director of the Company, also serves as a Technical Advisor and is the Qualified Person, as defined by National Instrument 43-101, responsible for reviewing and approving the technical content of all materials publicly disclosed by Benchmark, including the contents of this website.

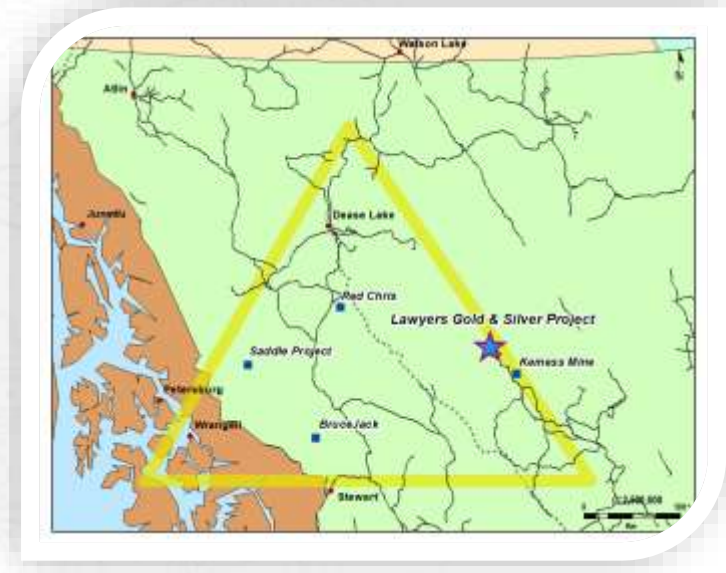
# BENCHMARK FACTSHEET



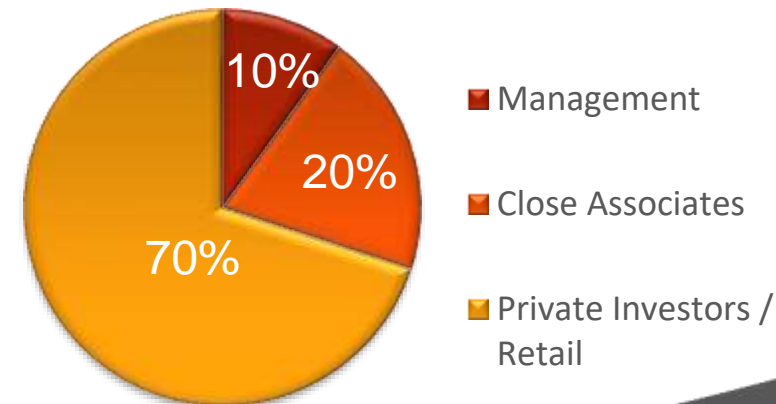
Share Structure as at Oct. 31	Number	Value
Shares outstanding @ \$0.28	38.3 M	\$10.7 M
Working Capital		\$ 1.5 M
Warrants	21.2 M	\$ 4.8 M
Agent warrants	0.8 M	\$ 0.3 M
Options	3.2 M	\$ 0.7 M
Fully diluted shares & potential working capital	63.4 M	\$ 7.3 M

## Key Facts

- Re-discovering gold & silver assets
- Projects in producing, prolific and proven regions
- Experienced and proven management
- Lawyers Gold & Silver Project in BC, Canada
- Gold & Diamond Projects in Nunavut, Canada
- Nunavut projects to become new companies with BNCH shareholder ownership



## Share Ownership



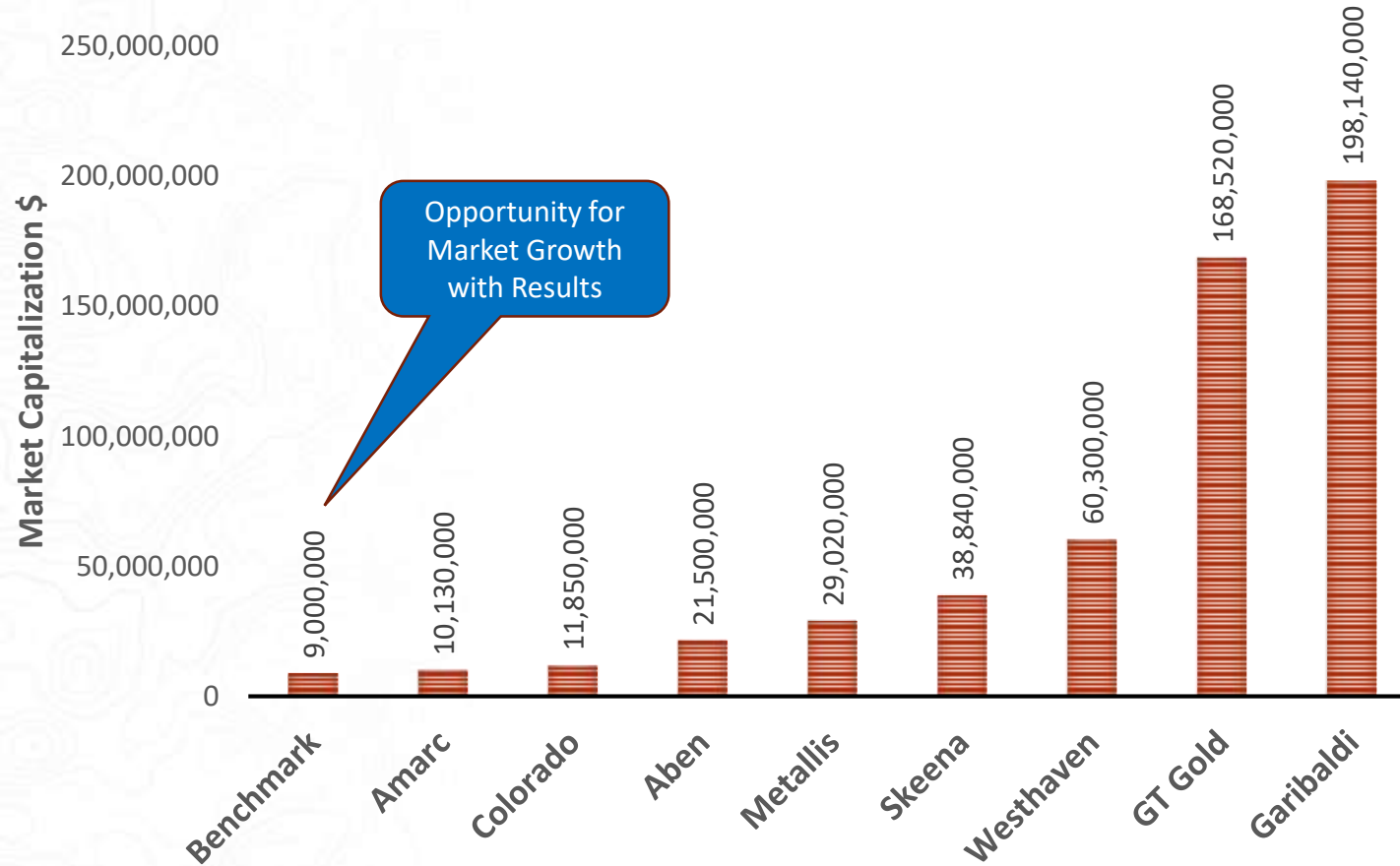
\*Approximate share ownership



# MARKET CAPITALIZATION COMPARABLES



## GOLDEN TRIANGLE & BRITISH COLUMBIA COMPANIES



### Benchmark Market Cap Drivers

- Gold & Silver drill results
- Resource expansion
- New discoveries
- Land acquisitions

# EXPERIENCED TEAM



Selected work engagements: DeBeers, BHP Billiton, Stornoway, Asanko Gold, Vale, Xtrata, HudBay Minerals, GoldFields, Stantec Mining

## World-Class Team

- Global exploration, development & production experience
- Broad range of commodities & deposit types
- In-house technical team supported by solid project management
- Highly effective marketing team
- Cost efficiencies through shared infrastructure & professionals within the Metals Group
- Success through the discovery, development and production cycle

*Global jurisdictions with operational experience*

# EXPERIENCED TEAM – Management & Directors



## **John Williamson, P.Geol** – CEO & Chairman

+25 years mining sector, founder of more than 20 successful companies in Canada and around the globe

## **Jim Greig, MBA** – President & Director

+20 years mining sector, formerly Keegan Resources Ltd, exploration to production expertise

## **Sean Mager** – CFO & Director

+20 years mining sector, former CFO & COO at Brilliant Resources Ltd., regulatory & financial expertise

## **Jeremy Yaseniuk** – Corporate Development

+20 years in financial markets, Director at Altiplano Minerals Ltd, marketing & financial expertise

## **Toby Pierce, MBA** – Director

+20 years senior executive with public resource companies, former Banker at GMP Securities London

## **Michael Dufresne, M.SC., P.Geol., P.Geo.** – Director

+30 years mining sector, professional geologist at world-class mining projects and jurisdictions

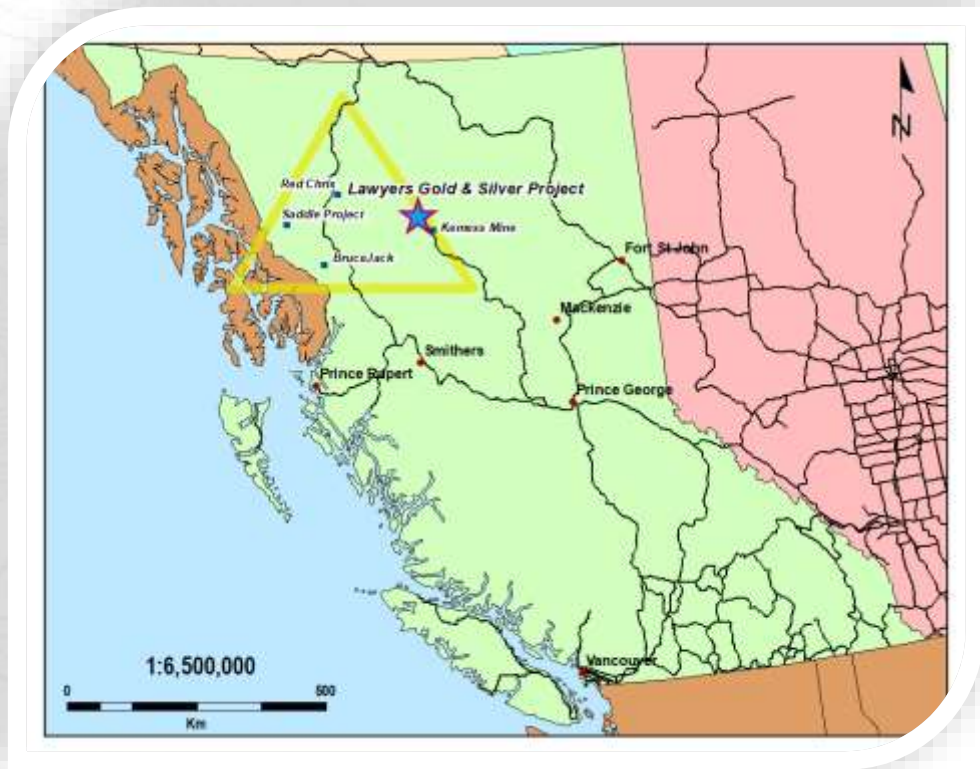
## **Team**

Collectively over *100 years* of mining experience

Management of over *25 public mining* companies delivering shareholder value

Raised in excess of *\$400 million* towards exploration, development & production

# GOLDEN TRIANGLE – Exploration to Production Success



## *The Golden Triangle Region is a Hotbed for Mineral Discovery*

Over **130 million oz. of gold**, **800 million oz. of silver** and **40 billion lbs of copper\*** have been found.

The amazing part is that this is only scratching the surface of the region's ultimate potential.

\* Source: <http://www.visualcapitalist.com/story-golden-triangle-british-columbia/>



*Mines are Discovered and Permitted to Production in British Columbia, Canada*



# REDISCOVERING GOLD & SILVER



## Lawyers Gold & Silver Project, BC Canada

- Re-discovering gold & silver with existing mine infrastructure
- 37 Mineral Claims covering 99km<sup>2</sup>
- **Past producer of 171,000oz gold & 3.7 million oz silver\***
- Estimated ~\$50 million existing infrastructure
- Proven & profitable mining jurisdiction
- 11km from existing & permitted Baker Mill
- 45km Northwest of the Kames Gold Copper Mine

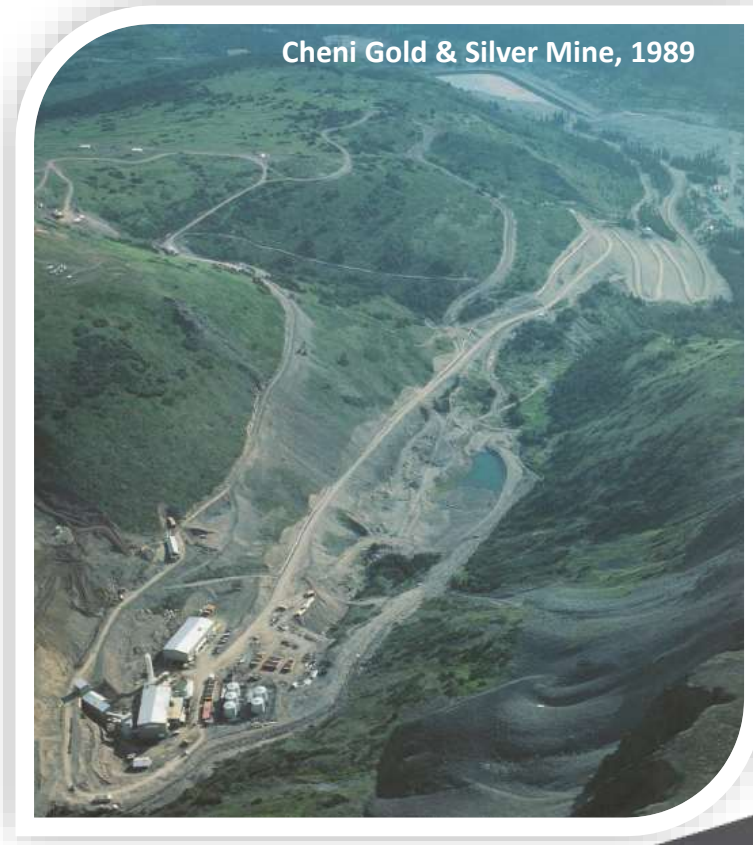


Cliff Creek Mine Portal, 2011

## High-grade Results (Cliff Creek Zone)

- 2.4m at **87 g/t gold & 2,407 g/t silver** (DDH CC15-15, P2 vein)
- 8.63m at **9.64 g/t gold & 307 g/t silver** (DDH CC15-06)
- 4.86m at **9.75 g/t gold & 447 g/t silver** (DDH CC15-12)

\* Source: Benchmark NI43-101 Report, SEDAR, [Benchmarkmetals.com](http://Benchmarkmetals.com)



Cheni Gold & Silver Mine, 1989



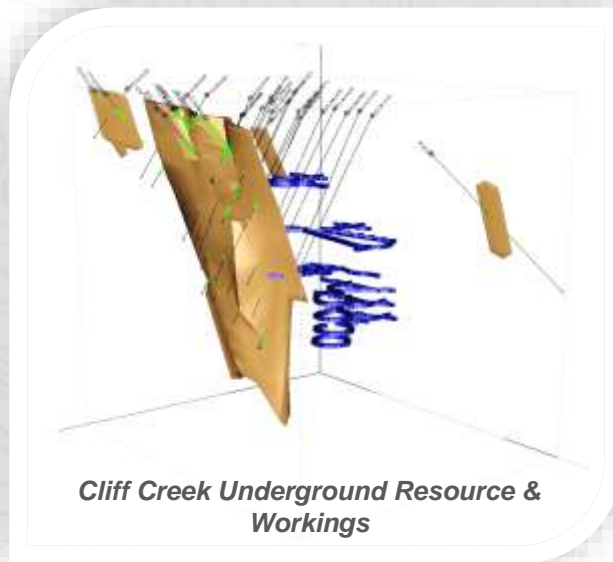
# Maiden Resource Estimate with Growth Opportunities



2018 Cliff Creek Maiden Resource Estimate**						
AuEQ Cut-off*	(tonnes)	Grade			Contained Metal	
		Au (g/t)	Ag (g/t)	AuEQ (g/t)	Au (ozs)	Ag (ozs)
3.50	690,000	4.12	190.08	6.10	91,000	4,220,000
<b>4.00</b>	<b>550,000</b>	<b>4.51</b>	<b>209.15</b>	<b>6.69</b>	<b>80,000</b>	<b>3,700,000</b>
4.50	440,000	4.90	230.48	7.30	69,000	3,260,000
5.00	350,000	5.30	253.88	7.94	60,000	2,860,000

## Focused Approach:

- Targeting resource expansion & new zones
- Road access with year-round exploration and results potential
- Historical data and modern methods provide keys to success
- 15 existing epithermal targets and 2 new discoveries, open for expansion
- Porphyry target potential
- Opportunities for new targets based on modern geophysics and sampling programs



## 2018 NI43-101 Technical Report\*\*:

- Resource Estimate calculated from 2 of 15 known zones
- Inferred Resource Estimate using 4g/t AuEQ
- **88,000 oz gold & 3,960,000 oz silver** (Cliff Creek & Dukes Ridge)
- Historic production recoveries of 93% gold and 78% silver
- Near-term potential to develop gold & silver ounces
- Numerous resource expansion targets near existing underground workings and at surface

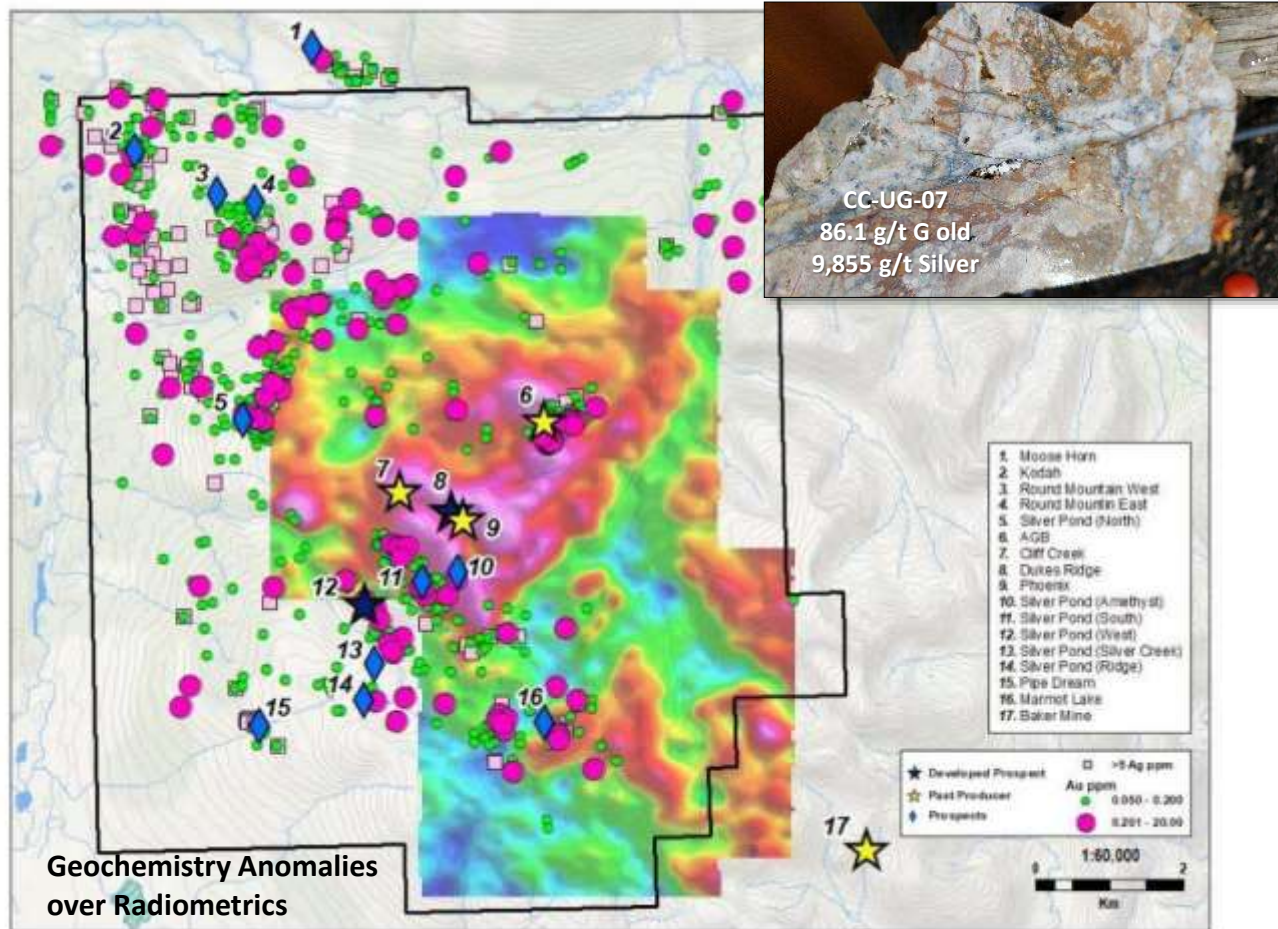
**Historical Production Recoveries**  
**93% Gold & 78% Silver**

\* Inferred mineral resources are not mineral reserves. Mineral resources, which are not mineral reserves, do not have demonstrated economic viability. There has been insufficient exploration to allow for the classification of the inferred resources tabulated above as an indicated or measured mineral resource, however, it is reasonably expected that the majority of the inferred mineral resources could be upgraded to indicated mineral resources with continued exploration. There is no guarantee that any part of the mineral resources discussed herein will be converted into a mineral reserve in the future.

\*\* The following prices of metals and conversions are used to calculate AuEq; \$US1,200/oz for Au and \$US14.50/oz for Ag; AuEq = [(Au g/t \* 1200 \* 0.95 / 31.1035 g/oz) + (Ag g/t \* 14.50 \* 0.82 / 31.1035 g/oz)] / (1200 \* 0.95 / 31.1035).

\*\*\* Contained ounces may not add due to rounding.

# 2018 Exploration Program



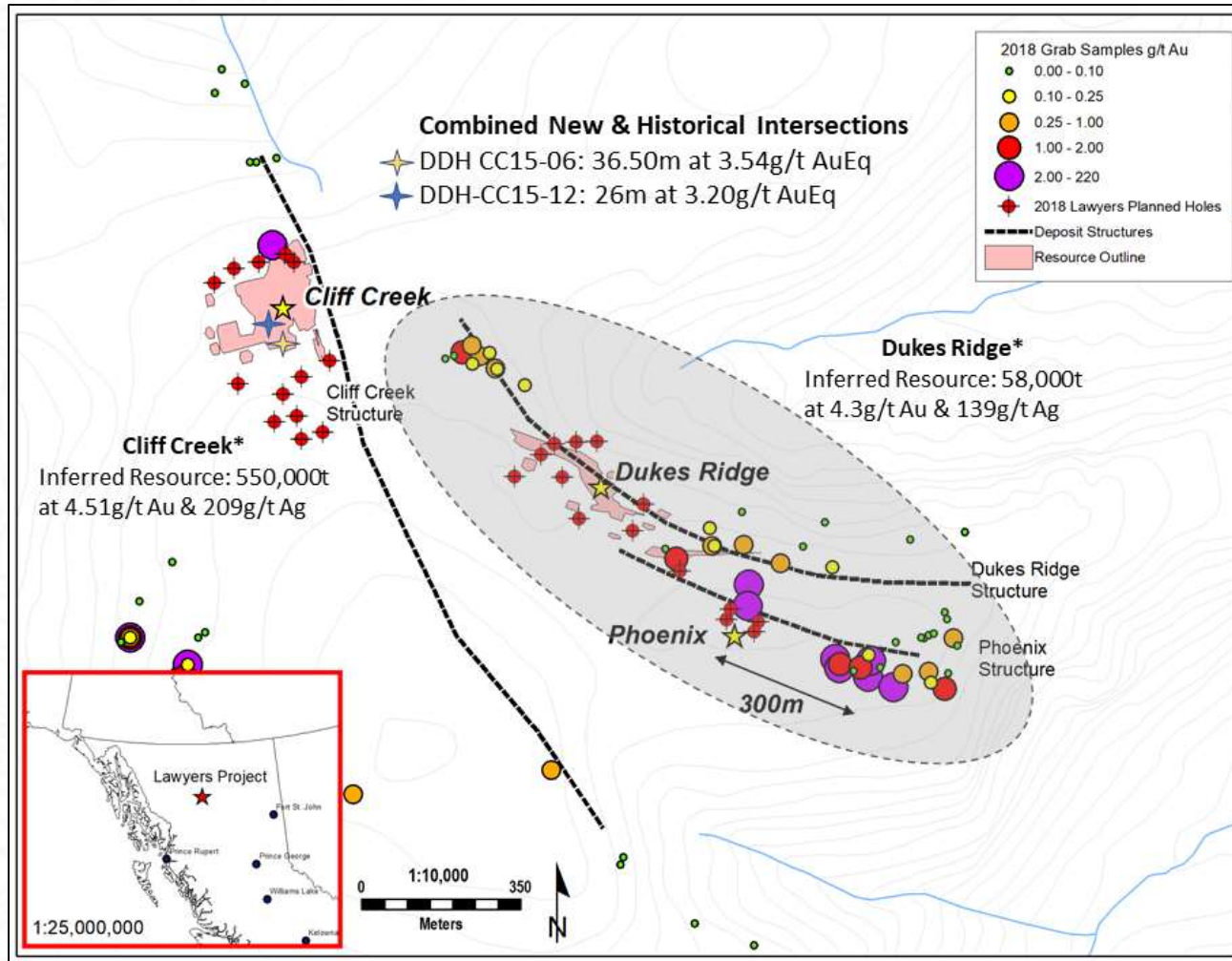
## 2018 Initial Exploration Highlights

- Historical compilation and interpretation
- Drone flying & interpretation
- Geochemistry – 1,041 soils & 312 rock sampling
- Resampling & logging of historical drill holes
- Airborne VTEM geophysics to identify new zones & trends
- 4,116m expansion & new target drilling program
- Results analysis for a 2019 large scale resource expansion drill program

## Results & New Discoveries

- Average drill hole depth under 100m
- All zones open at strike, width and depth
- New discoveries include –Marmot and Phoenix East
- 1,000m mineralized intersections sampled from historical holes

# Comparable Deposit Footprint



## Property Wide Potential OPEN

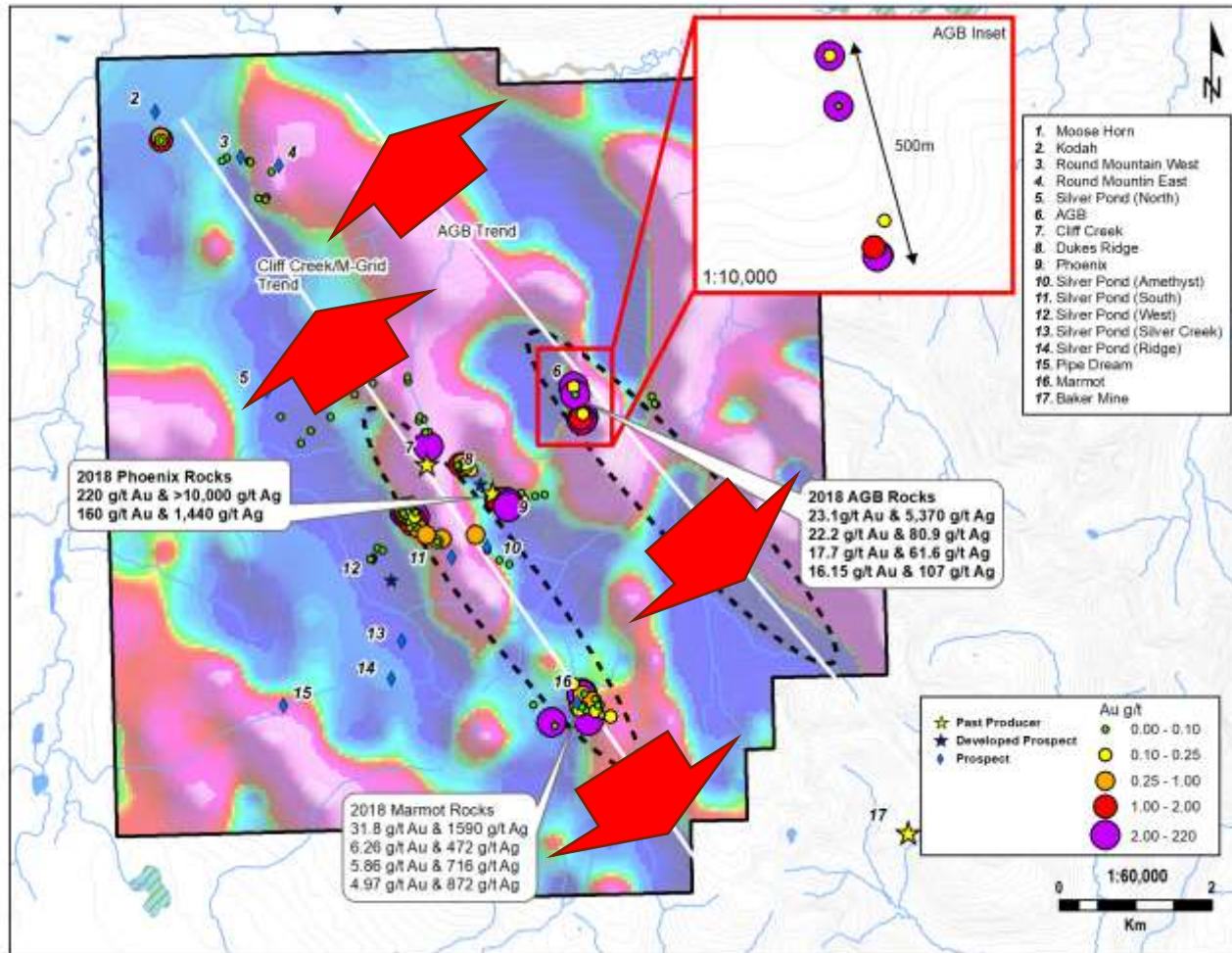
- 90% of the 99km<sup>2</sup> land package is under-explored
- Widespread silver-gold mineralization and alteration
- Potential for silver-gold zones to coalesce along strike and down-dip
- Additional historical drill-holes available for resampling with over-looked mineralization (approx. 1,600m)

\* Cliff Creek & Dukes Ridge Inferred Resource: Lane et al., 2018 - Benchmark NI43-101 Report, SEDAR, [Benchmarkmetals.com](https://www.benchmarkmetals.com)

\*\* [Pinion Oxide Deposit](#), SEDAR – Gold Standard Ventures Corp.



# Platform for Growth – Open Gold & Silver Zones



## Widespread Potential & Anomalies

- Prospects & targets open for expansion
- New zones discovered –Phoenix East, Marmot
- Anomalous gold & silver across all areas
- 2018 selected high-grade rock grab results:
  - 340.83 g/t AuEq - 220 g/t gold and +10,000 g/t silver (Phoenix occurrence);
  - 177.5 g/t AuEq - 160 g/t gold and 1,440 g/t silver (Phoenix occurrence);
  - 87.99g/t AuEq - 23.1 g/t gold and 5,370 g/t silver (AGB occurrence); and
  - 51 g/t AuEq - 31.8 g/t gold and 1,590 g/t silver (Marmot occurrence).

Gold equivalent numbers are calculated using \$1,200 Au/oz and \$14.50 Ag/oz.

# Value Proposition



## Project & People

- Targeting 2 million oz gold and 20 million oz silver
- Existing Resource Estimate includes 88,000 oz Au & 4 million oz Ag
- 15 historical targets and 2 new discoveries for exploration & development
- \$50 million in infrastructure remains in-place
- Road accessible project in the Golden Triangle region
- Management with over 100 years mining experience and includes near \$400 million financings
- Track record of advancing exploration projects through to production scenarios
- New company 'spinout' utilizing 100% owned Nunavut Diamond & Gold projects



Lawyers Portal Entrance

*The best place to find a new mine,  
is near an existing mine!*

## 2019 Exploration Program

- 25,000m expansion & new target drilling program – diamond core & RC
- Ground IP and Gravity Geophysics
- Geochemistry, soil & rock sampling across anomalies areas
- Sampling & logging of 15 overlooked holes from previous years

## Milestone & Timeline





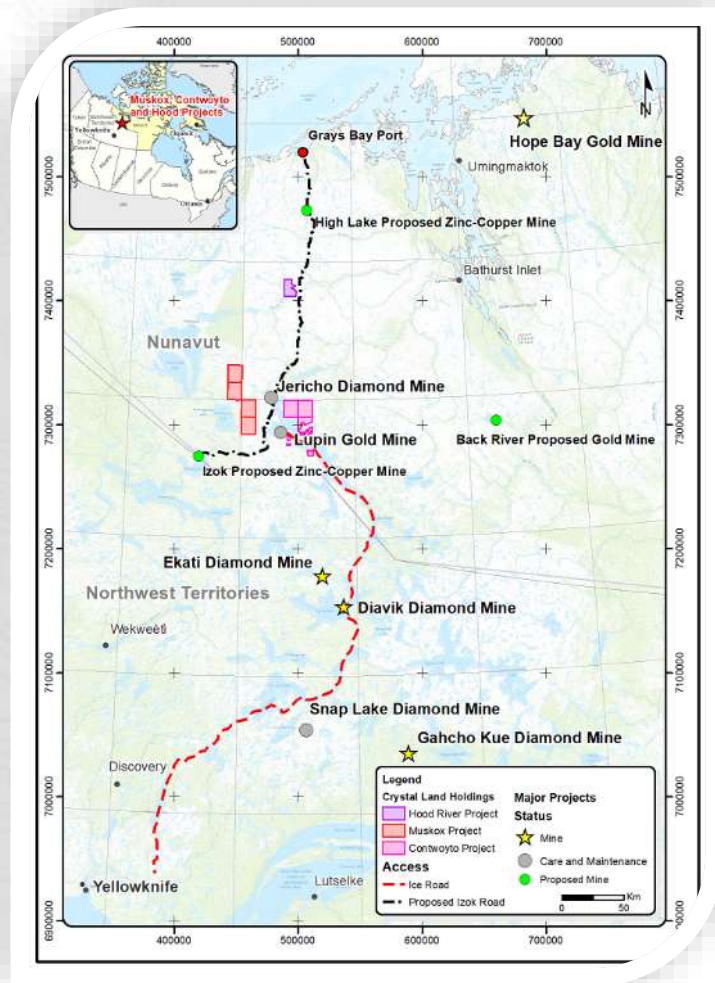
# Lawyers Deal Structure



## TERMS:

- \$200,000 payed at signing
  - 3 year earn-in agreement for 75% after \$9 million total spending
  - 51% after \$5 million
  - 60% after \$2.5 million
  - 75% after \$1.5 million
- 4 million shares over earn-in period
  - 1 million shares issued
  - 2 millions shares at 51%
  - 1 million shares at 60%
- 2.5% NSR subject to buyout provision





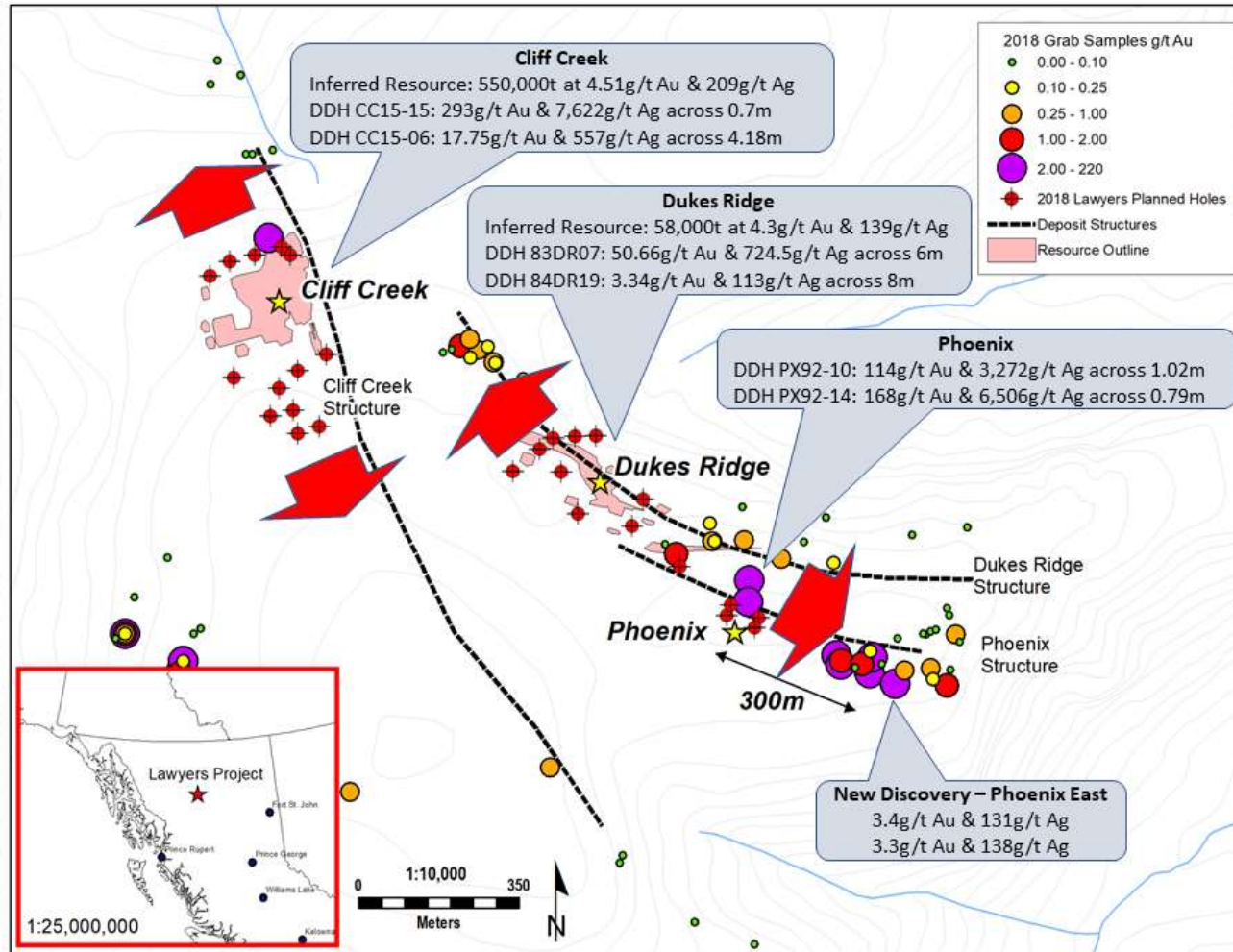
## Diamond & Gold Projects

- 100% owned in Nunavut, Canada
- Potential to establish new gold and diamond companies with shareholder equity ownership
- Contwoyto Gold Project
  - 63g/t Au over 4.9m (DDH 97-13)\*
  - 18 g/t Au across 3m (DDH17CEI-02)\*
- Muskox & Contwoyto Diamond Projects
  - Diamonds\* recovered include 2.73 carats, 2.67 carats, 1.61 carats, 0.49 carats
- Prolific and proven gold & diamond region

\*Source: SEDAR, [Benchmarkmetals.com](http://Benchmarkmetals.com)

\*\*Source: SEDAR, Besserer 2016, NI43-101 Technical Report

# Drilling for Expansion and New Target Areas



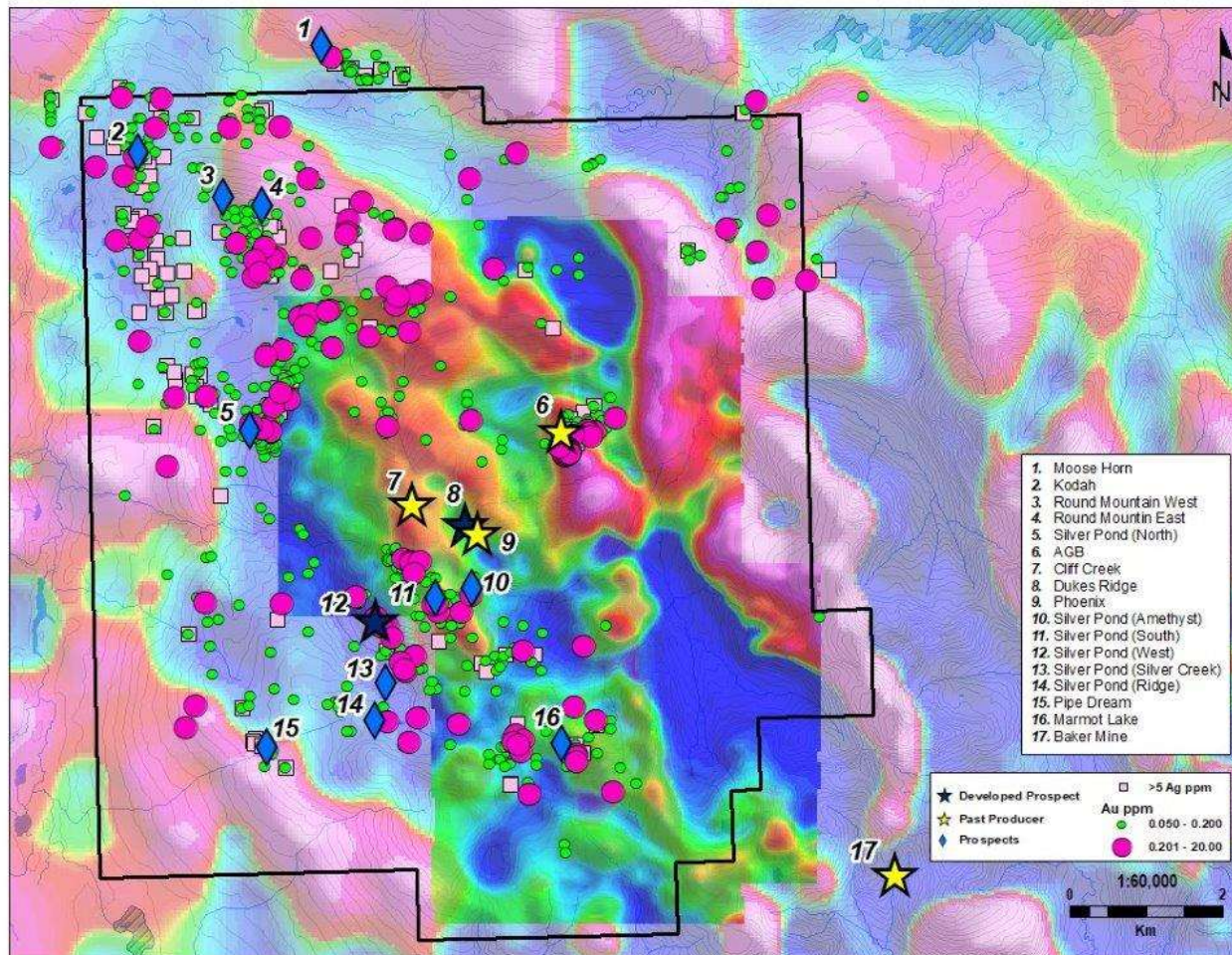
## Property Wide Potential OPEN

- 90% of the 99km<sup>2</sup> land package is under-explored
- Widespread silver-gold mineralization and alteration
- Potential for silver-gold zones to coalesce along strike and down-dip
- Additional historical drill-holes available for resampling with over-looked mineralization (approx. 1,600m)

Cliff Creek & Dukes Ridge Inferred Resource: Lane et al., 2018 - Benchmark NI43-101 Report, SEDAR, [Benchmarkmetals.com](http://Benchmarkmetals.com)

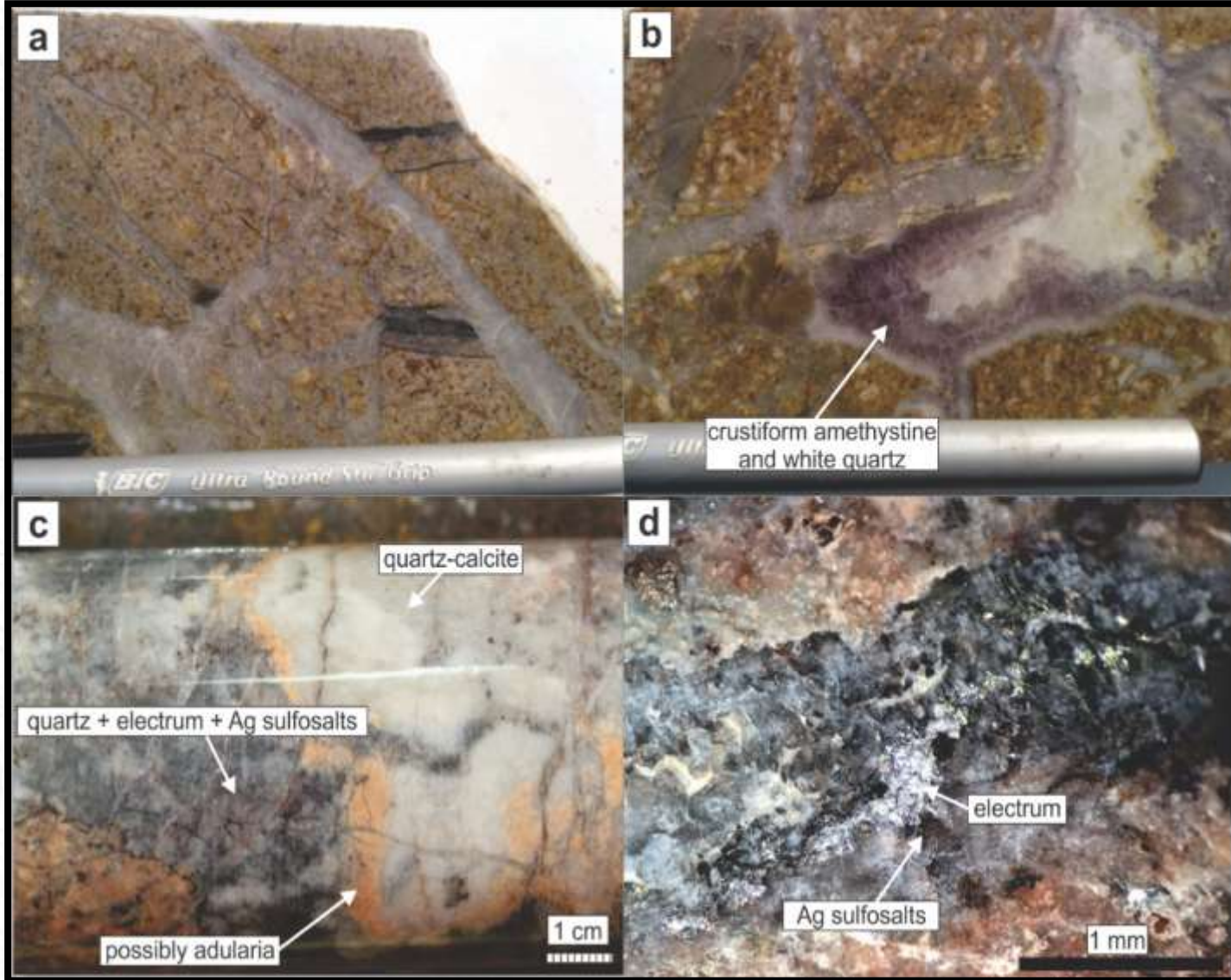


# Magnetics with Gold & Silver Anomalies





# Gold & Silver Mineralization



Cliff Creek Zone (CC-UG-07)

- 86.1g/t Gold
- 9,855g/t Silver

# CONTACT US



**Jeremy Yaseniuk**, Corporate Development



[jeremy@bnchmetals.com](mailto:jeremy@bnchmetals.com)



1.604.773.1467

**Jim Greig**, President



[jimg@bnchmetals.com](mailto:jimg@bnchmetals.com)



1.778.788.2745

**John Williamson**, chairman & CEO



[johnw@bnchmetals.com](mailto:johnw@bnchmetals.com)



1.780.437.6624

## Head Office

250 Southridge NW, Third Floor  
Edmonton, Alberta  
Canada T6H 4M9

## Vancouver Office

Suite 717, 1030 W. Georgia Street  
Vancouver, BC  
Canada V6E 2Y3



LinkedIn/Benchmark Metals