

Targeting 2 Million oz Gold & 20 Million oz Silver



March 1, 2019

BENCHMARKMETALS.COM

TSX/V : **BNCH** | OTCQB : **CYRTF** | WKN : **A2JM2X**

Forward Looking Statements:

Certain statements and/or graphics in the Company's press releases, web site information and corporate displays, among others, constitute "forward-looking statements". These statements are based on information currently available to the Company and the Company provides no assurance that actual results will meet management's expectations. Forward-looking statements include estimates and statements that describe the Company's future plans, objectives or goals, including words to the effect that the Company or management expects a stated condition or result to occur. Forward-looking statements may be identified by terms such as "believes", "anticipates", "expects", "estimates", "may", "could", "would", "will", or "plan", or their conditional or future forms. Since forward-looking statements are based on assumptions and address future events and conditions, by their very nature they involve inherent risks and uncertainties.

Actual results relating to, among other things, results of exploration, project development, reclamation and capital costs of the Company's mineral properties, and the Company's financial condition and prospects, could differ materially from those currently anticipated in such statements for many reasons such as: changes in general economic conditions and conditions in the financial markets; changes in demand and prices for minerals; litigation, legislative, environmental and other judicial, regulatory, political and competitive developments; technological and operational difficulties encountered in connection with the activities of the Company; and other matters discussed in this presentation. This list is not exhaustive of the factors that may affect any of the Company's forward-looking statements. These and other factors should be considered carefully and readers should not place undue reliance on the Company's forward-looking statements. The Company does not undertake to update any forward looking statement that may be made from time to time by the Company or on its behalf, except if required to do so by applicable securities laws. You are cautioned not to place any undue reliance on any forward-looking statement.

Forward Looking Statements or Information Related to Exploration:

Relating to exploration, the identification of exploration targets and any implied future investigation of such targets on the basis of specific geological, geochemical and geophysical evidence or trends are future-looking and subject to a variety of possible outcomes which may or may not include the discovery, or extension, or termination of mineralization. Further, areas around known mineralized intersections or surface showings may be marked by wording such as "open", "untested", "possible extension" or "exploration potential" or by symbols such as "?". Such wording or symbols should not be construed as a certainty that mineralization continues or that the character of mineralization (e.g. grade or thickness) will remain consistent from a known and measured data point. The key risks related to exploration in general are that chances of identifying economical reserves are extremely small.

The presentation contains historical exploration data that have not been verified by Benchmark Metals Inc. and may not be accurate or complete, and therefore the information should not be relied upon.

Michael Dufresne, M.Sc., P.Geol., P.Geo., an independent director of the Company, also serves as a Technical Advisor and is the Qualified Person, as defined by National Instrument 43-101, responsible for reviewing and approving the technical content of all materials publicly disclosed by Benchmark, including the contents of this website.

BENCHMARK FACTSHEET



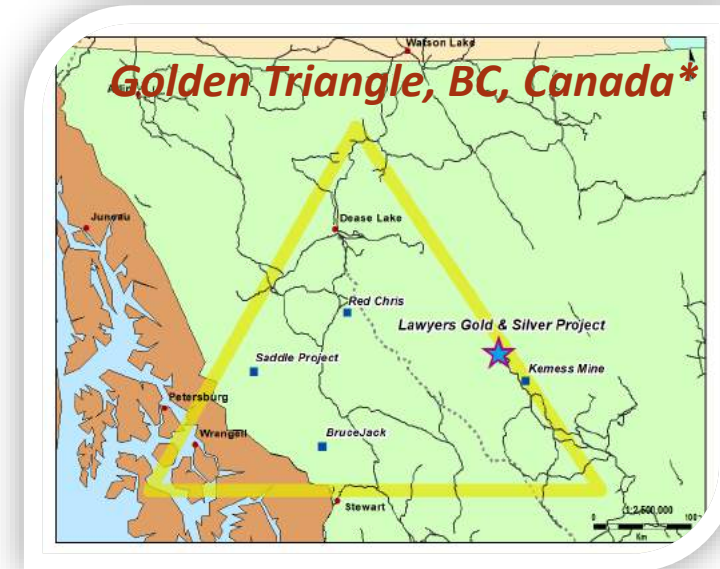
Share Structure as at Feb. 28, 2019		
Current Shares outstanding & market cap @ \$0.24	42.2 M	\$10.1 M
Estimated working capital		\$1.1 M
In the money warrants	17.2 M	\$3.9 M
In the money options	2.7 M	\$0.4 M
In the money diluted working capital		\$5.4 M
In the money diluted shares & market cap @ \$0.24	62.1 M	\$14.9 M
Fully diluted working capital		\$6.1 M
Out of the money options	64.2 M	\$15.4 M

Key Facts

- ~\$50 million in existing infrastructure
- Projects in producing and prolific regions
- Experienced and proven management
- Lawyers Gold & Silver project in BC, Canada
- Gold & Diamond projects in Nunavut, Canada
- New companies to be formed with BNCH shareholder ownership for Nunavut assets



*The Golden Triangle Region is a Hotbed for Mineral Discovery**

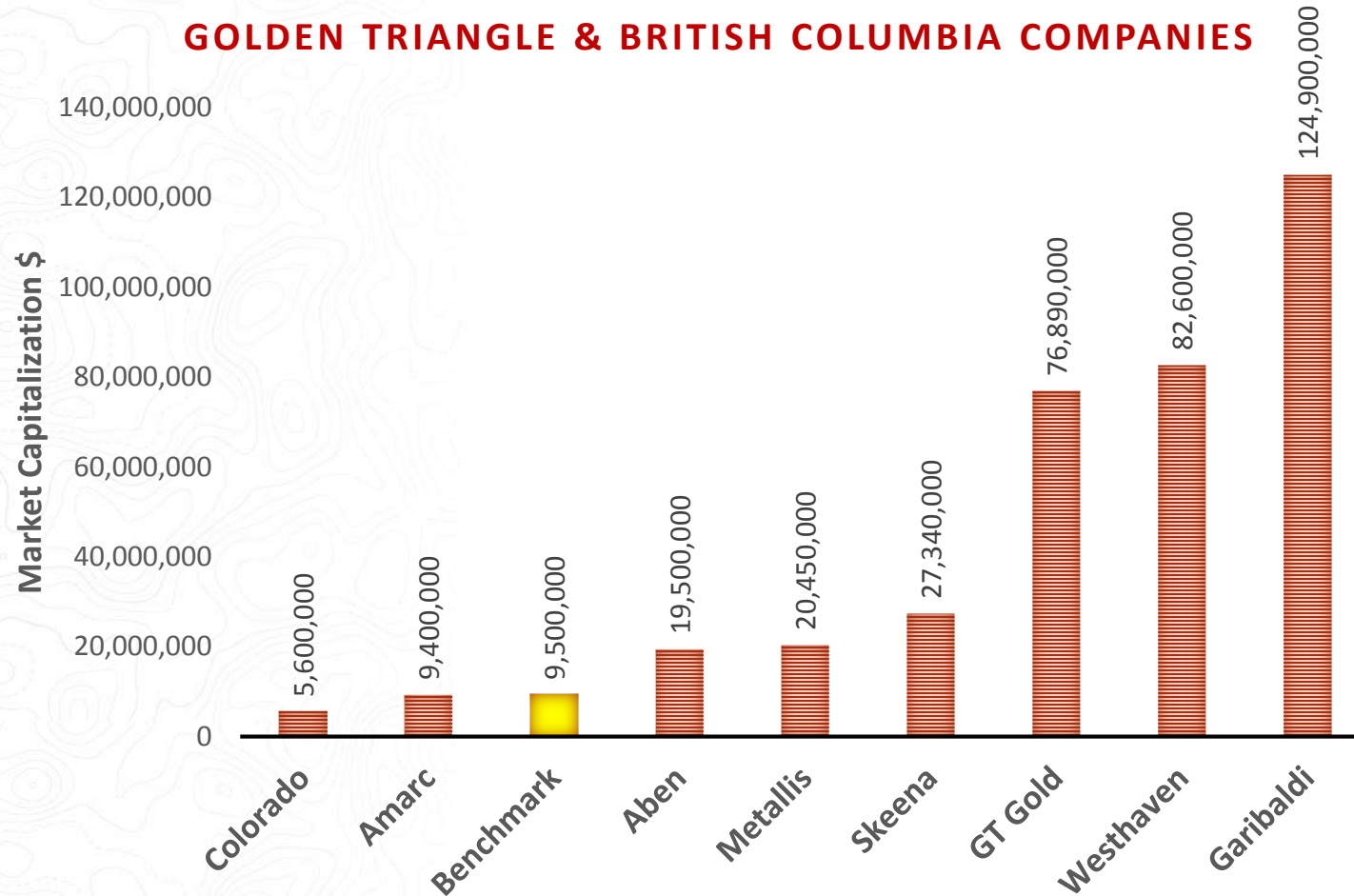


* Source: <http://www.visualcapitalist.com/story-golden-triangle-british-columbia/>

MARKET CAPITALIZATION COMPARABLES



GOLDEN TRIANGLE & BRITISH COLUMBIA COMPANIES

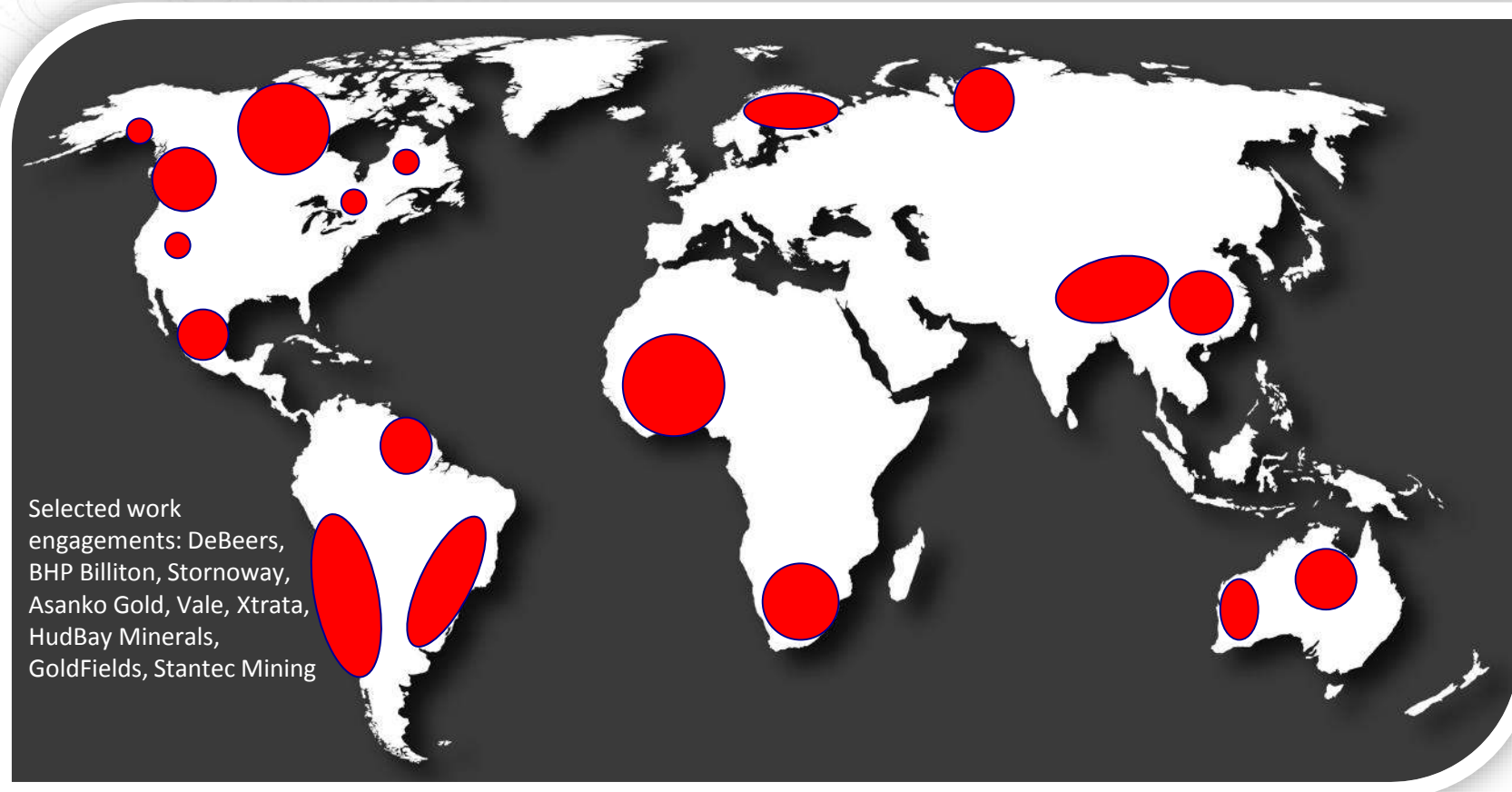


Market Capitalization levels at February 22, 2019

Benchmark Market Cap Drivers

- Gold & Silver drill results
- Resource expansion
- New discoveries
- Land acquisitions
- Value opportunity with results

EXPERIENCED TEAM



Selected work engagements: DeBeers, BHP Billiton, Stornoway, Asanko Gold, Vale, Xtrata, HudBay Minerals, GoldFields, Stantec Mining

World-Class Team

- Global exploration, development & production experience
- Broad range of commodities & deposit types
- In-house technical team supported by solid project management
- Highly effective marketing team
- Cost efficiencies through shared infrastructure & professionals within the Metals Group
- Success through the discovery, development and production cycle

Global jurisdictions with operational experience

EXPERIENCED TEAM – Management & Directors



John Williamson, P.Geol – CEO & Chairman

+25 years mining sector, founder of more than 20 successful companies in Canada and around the globe

Jim Greig, MBA – President & Director

+20 years mining sector, formerly Keegan Resources Ltd, exploration to production expertise

Sean Mager – CFO & Director

+20 years mining sector, former CFO & COO at Brilliant Resources Ltd., regulatory & financial expertise

Jeremy Yaseniuk – Corporate Development

+20 years in financial markets, Director at Altiplano Minerals Ltd, marketing & financial expertise

Toby Pierce, MBA – Director

+20 years senior executive with public resource companies, former Banker at GMP Securities London

Michael Dufresne, M.SC., P.Geol., P.Geo. – Director

+30 years mining sector, professional geologist at world-class mining projects and jurisdictions

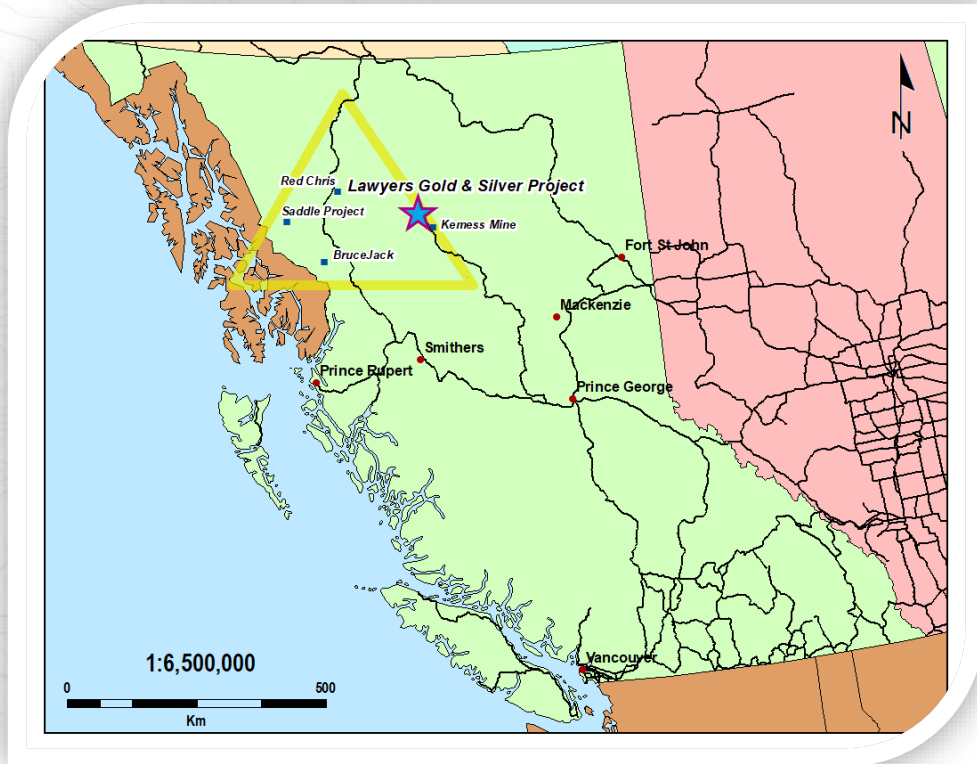
Team

Collectively over *100 years* of mining experience

Management of over *25 public mining* companies delivering shareholder value

Raised in excess of *\$400 million* towards exploration, development & production

GOLDEN TRIANGLE – Exploration to Production Success



The Golden Triangle Region is a Hotbed for Mineral Discovery

Over **130 million oz. of gold**, **800 million oz. of silver** and **40 billion lbs of copper*** have been found

The amazing part is that this is only scratching the surface of the region's ultimate potential

The Stikine terrane is home to BC's Golden Triangle

The highly prospective Toodoggone River area represents the eastern extent of the Stikine terrane and (is) possibly part of a larger, continuous mineral system**

* Source: <http://www.visualcapitalist.com/story-golden-triangle-british-columbia/>

**Source: BC Geoscience, 2019

*Mines are Discovered and Permitted to Production
in British Columbia, Canada*



REDISCOVERING GOLD & SILVER



Lawyers Gold & Silver Project, BC Canada

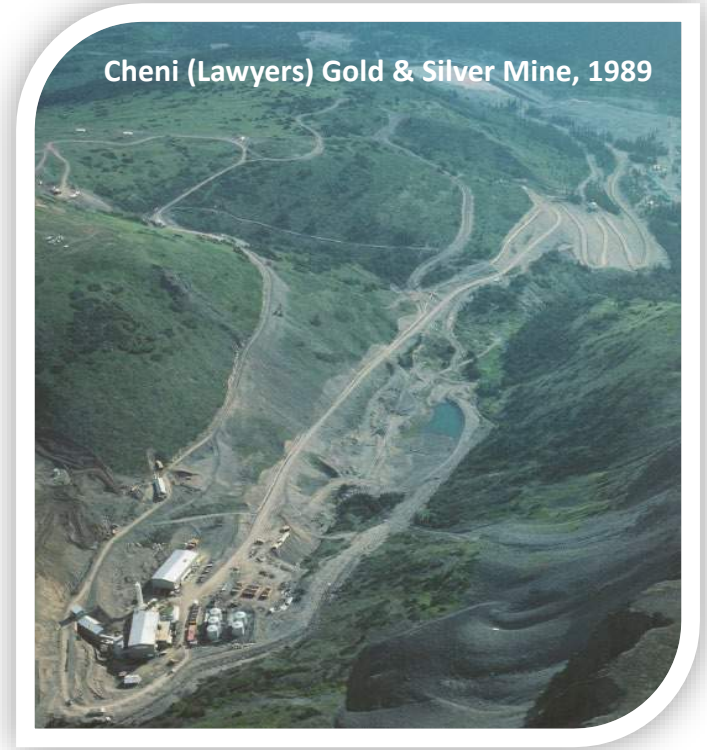
- 120km² gold & silver package with existing mine infrastructure
- Past producer of 171,000oz gold & 3.7 million oz silver*
- Estimated ~\$50 million existing infrastructure
- Proven & profitable mining jurisdiction
- 11km from existing & permitted Baker Mill
- 45km Northwest of the Kemess Gold Copper Mine

High-Grade Results

- 3.05m at 52g/t gold & 846g/t silver (DDH DRRC010, 2019 results)
- 2.4m at 87g/t gold & 2,407g/t silver (DDH CC15-15, P2 vein)

Bulk-Tonnage Results

- 33.52m at 5.76g/t gold & 128.65g/t silver (2019 results)
- 36.5m at 2.68g/t gold & 82.57g/t silver (2018 results)
- 26m at 2.42g/t gold & 100.26g/t silver (2018 results)



* Source: Benchmark NI43-101 Report, SEDAR, Benchmarkmetals.com

Maiden Resource Estimate with Growth Opportunities



2018 NI 43-101 Technical Report:

- Resource calculated using 4g/t AuEQ from 2 of +16 known zones
- 88,000 oz gold & 3,960,000 oz silver** (Cliff Creek & Dukes Ridge)
- Historic production recoveries of 93% gold and 78% silver
- Expansion targets near existing underground workings and at surface
- 2018 step-out drilling is not included within the Resource Estimate

Moving Forward:

- Targeting resource expansion & new discoveries
- Road access with year-round exploration and results potential
- Historical data and modern methods provide keys to success
- +16 epithermal targets & 2 new discoveries, open for expansion
- Porphyry target potential

Maiden Resource Estimate Prior to 2018 Exploration*

AuEQ Cut-off**		Grade			Contained Metal***	
		(g/t)	(tonnes)	Au (g/t)	Ag (g/t)	AuEQ (g/t)
3.50	690,000	4.12	190.08	6.10	91,000	4,220,000
4.00	550,000	4.51	209.15	6.69	80,000	3,700,000
4.50	440,000	4.90	230.48	7.30	69,000	3,260,000
5.00	350,000	5.30	253.88	7.94	60,000	2,860,000

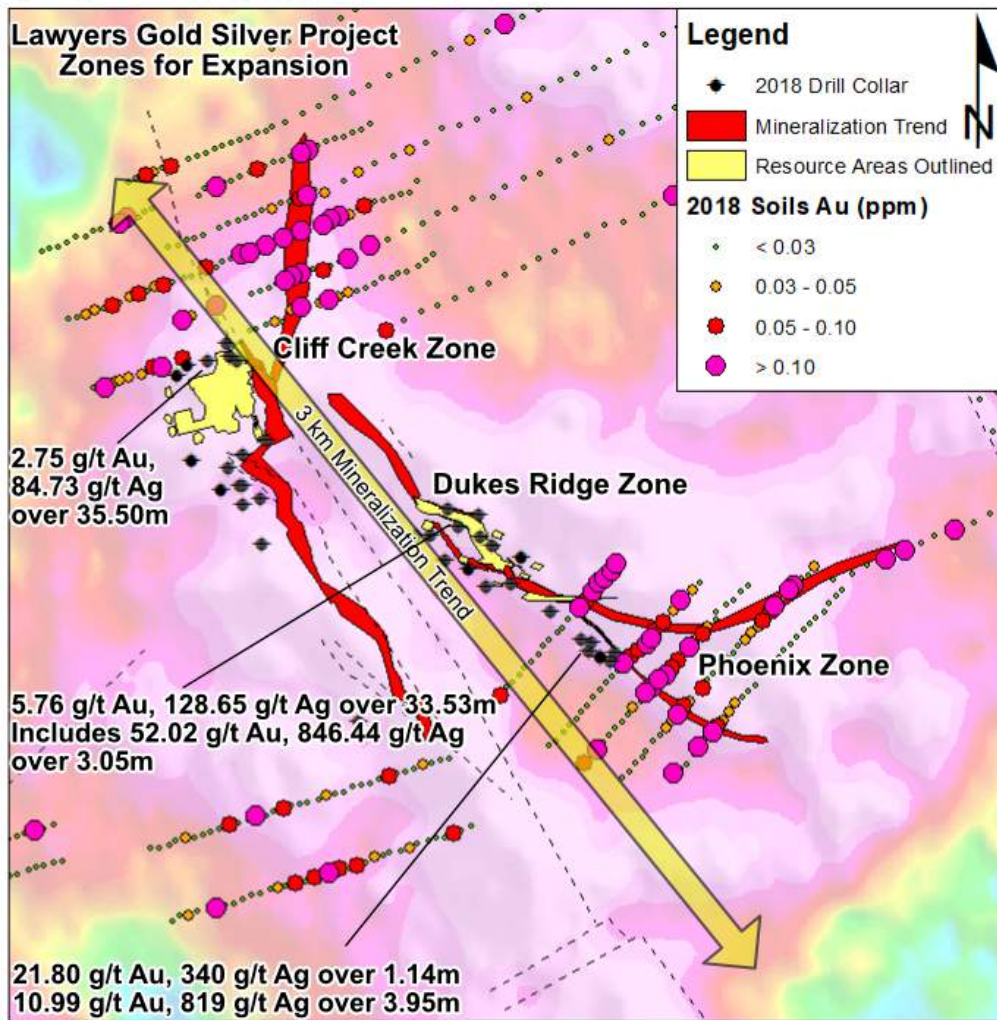
* Inferred mineral resources are not mineral reserves. Mineral resources, which are not mineral reserves, do not have demonstrated economic viability. There has been insufficient exploration to allow for the classification of the inferred resources tabulated above as an indicated or measured mineral resource, however, it is reasonably expected that the majority of the inferred mineral resources could be upgraded to indicated mineral resources with continued exploration. There is no guarantee that any part of the mineral resources discussed herein will be converted into a mineral reserve in the future.

** The following prices of metals and conversions are used to calculate AuEQ; \$US1,200/oz for Au and \$US14.50/oz for Ag; AuEQ = [(Au g/t * 1200 * 0.95 / 31.1035 g/oz) + (Ag g/t * 14.50 * 0.82 / 31.1035 g/oz)] / (1200 * 0.95 / 31.1035).

*** Contained ounces may not add due to rounding.

The Company is encouraged by drilling results at the Lawyers Trend and believes that follow-up drilling during 2019 will lead to a significant increase in the existing mineral resources at the Lawyers Project

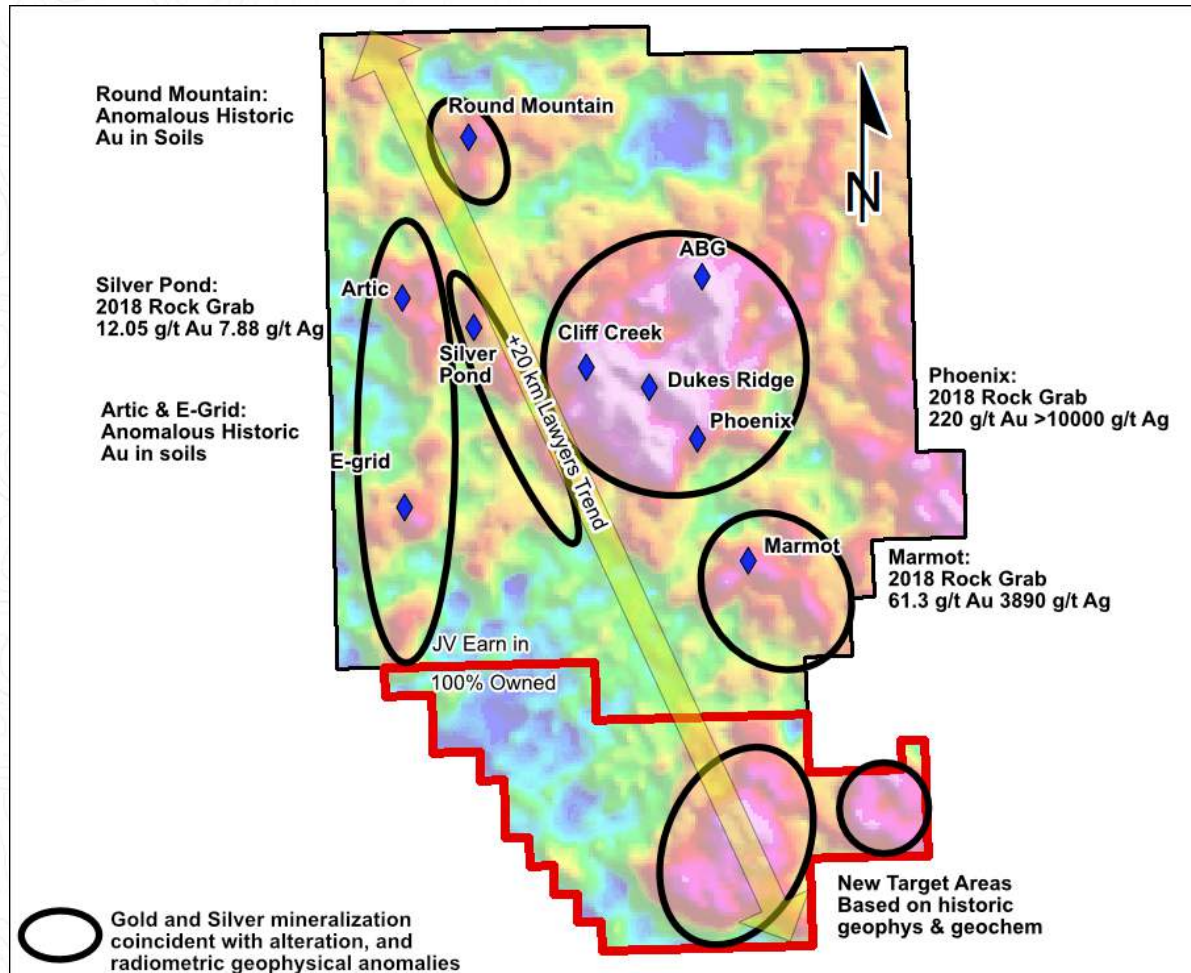
2018 Exploration Program



2018 Exploration Highlights

- New discoveries - Marmot and Phoenix East zones
- Expansion from step-out drilling in resources areas
- Resampling of historical drill-holes has generated bulk tonnage drill intercepts
- Resource expansion and new targets delineated by:
 1. Drilling
 2. Anomalous geochemistry
 3. Potassic alteration
 4. Radiometric geophysics
- High-grade drill intercepts within wider envelopes
- All zones open at strike and width
- Open at depth - average drill hole under 100m

Anomalous Mineralization Across the Property



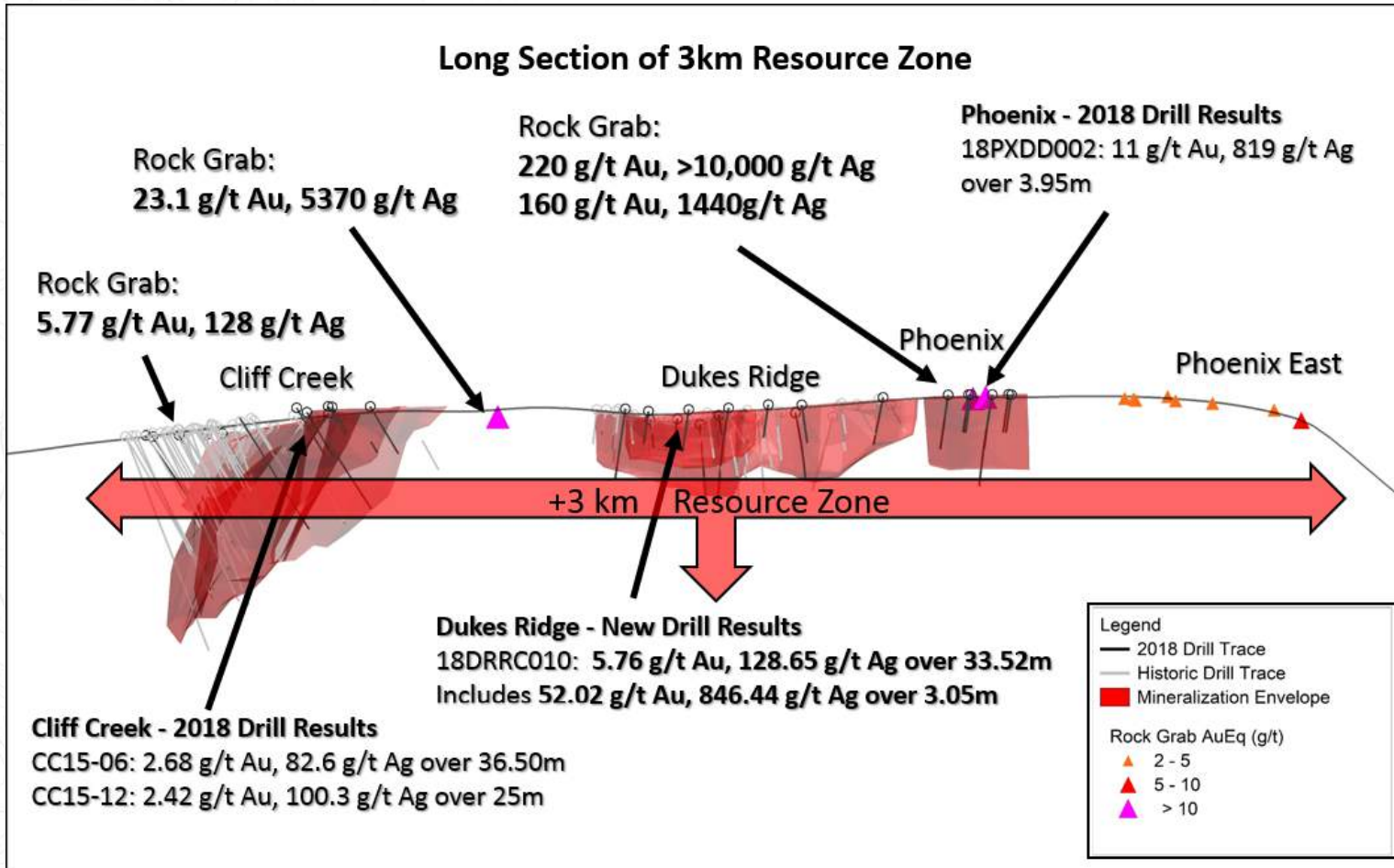
Property-Wide Potential OPEN in ALL Directions

- 90% of the 120km² land package is under-explored
- Widespread silver-gold mineralization and alteration
- Potential for silver-gold zones to coalesce along strike and down-dip
- Targets & prospects open for expansion
- New discovery potential
- 2018 selected high-grade rock grab results:
 - 220 g/t gold and +10,000 g/t silver (Phoenix Zone)
 - 160 g/t gold and 1,440 g/t silver (Phoenix Zone)
 - 23.1 g/t gold and 5,370 g/t silver (AGB Zone)
 - 61.3 g/t gold and 3,890 g/t silver (Marmot Zone)

+3 km Resource Zone of Lawyers Trend

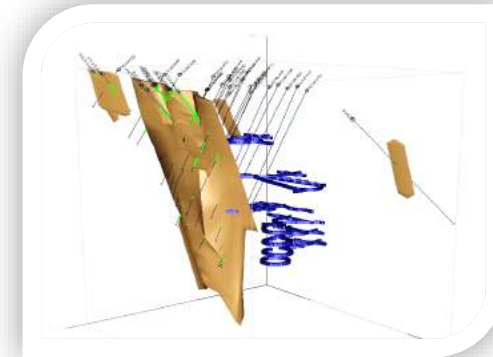


Long Section of 3km Resource Zone



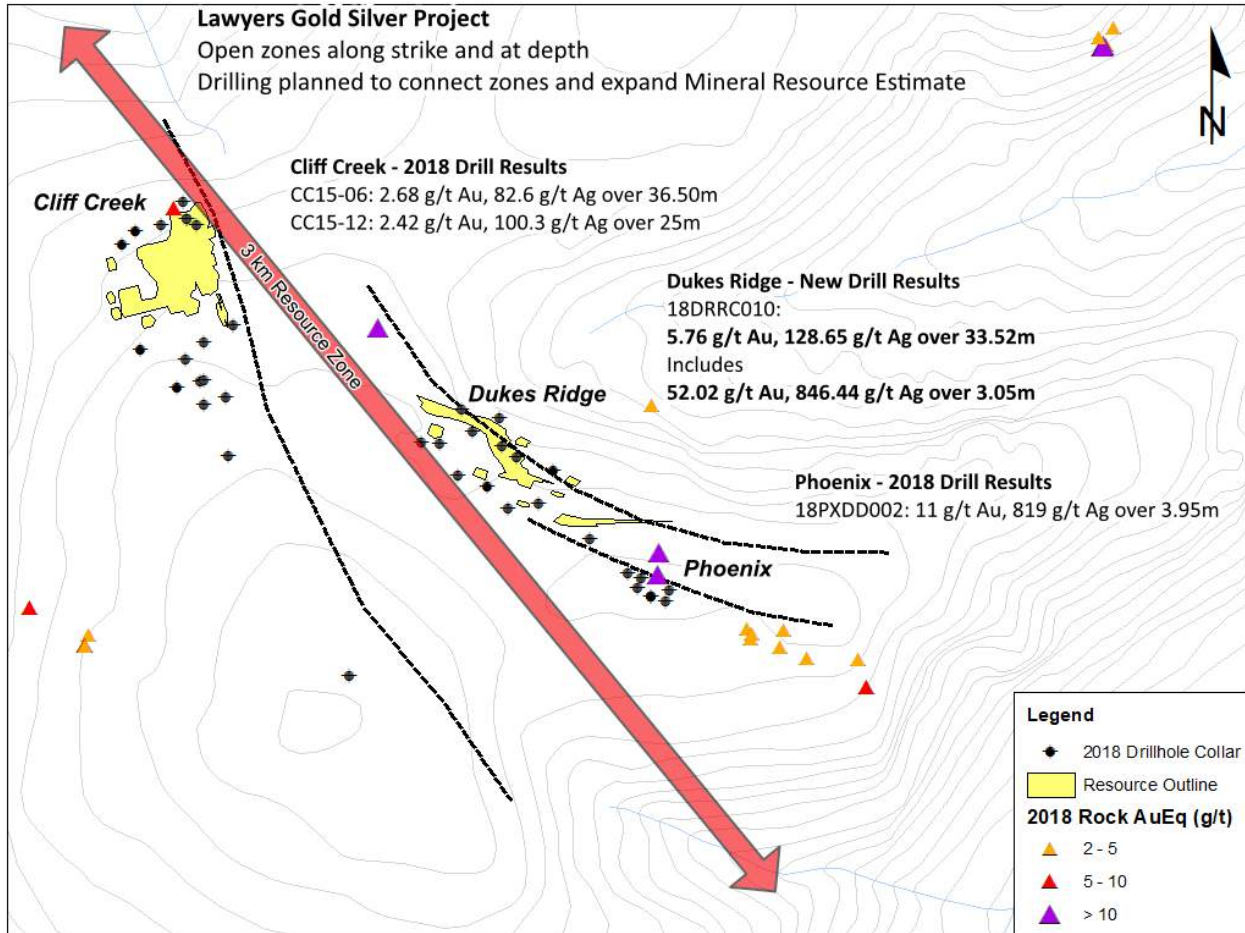
Gold & Silver mineralization exists along the entire trend as confirmed by:

- *Soil samples*
- *Rock grab samples*
- *Magnetic geophysics*
- *Radiometric geophysics*
- *Drilling*



Cliff Creek Underground Resource & Workings

Drilling for Expansion and New Target Areas



Open Anomalous Gold and Silver Zones

- Cliff Creek to Phoenix zones contain the focus for resource expansions across the +10 km Trend
- Potential for silver-gold zones to coalesce along strike and down-dip
- Zones open in ALL directions across +10km:
 - 1. On-strike
 - 2. Down-dip
 - 3. Width
- All zones are indicated by soil & surface rock grab samples, alteration, geophysics and drilling
- 2018 drilling has provided a path for resource expansion drilling in 2019
- Multiple new discovery targets across the 120km² project

Comparable Deposits & Geology



Lawyers Project similarities - Patagonia Argentina, World-Class Gold-Silver Mines

- Mining began as narrow high-grade veins to bulk-tonnage operations
- Comparable scope and scale potential
- Epithermal precious metal deposits
- Same age rocks - Jurassic volcanics are key to precious metals deposition worldwide
- Low sulphidation with Quartz-Adularia-Kaolinite and Propylitic alteration



Cerro Negro Gold-Silver Mine*

- Open pit and multiple underground mines
- 2017 production: 452,000oz Au
- 2017 AISC at \$684oz
- 4.9M gold reserves + 1.2M measured & indicated gold
- 4,000tpd plant
- 96% Heap leach recovery

*Source: www.goldcorp.com/English/portfolio/operations/cerro-negro/default.aspx

Cerro Vanguardia Gold-Silver Mine**

- Multiple narrow high-grade veins in open pits and underground
- 2017 production: 283,000oz Au and 6.2M oz Ag
- 2017 total cash cost at \$522oz, AISC at \$772oz
- +3 million Au oz in reserves and resources after 20 years of operations
- 3,000tpd plant, 2017 production of 3.1Mt at 7.5g/t Au

**Source: www.aga-reports.com/17/op#2

Value Proposition



Project & People

- Targeting 2 million oz gold and 20 million oz silver
- Existing resource estimate includes 88,000 oz Au & 4 million oz Ag
- +10 km Lawyers Trend indicated by geochemistry, surface sampling, alteration, geophysics and drilling
- Near 5,000m drilling in 2018 is not included in the Mineral Resource Estimate
- New large high-priority targets identified
- Bulk tonnage drill intercepts from surface envelope high-grade gold-silver veins
- Land package increased from 99 km² to 120 km²
- \$50 million in infrastructure remains in-place
- Road accessible project in the Golden Triangle
- Management with over 100 years mining experience and includes near \$400 million financings
- Track record of advancing exploration projects through to production scenarios
- New company 'spinout' utilizing 100% owned Nunavut diamond & gold projects



*The best place to find a new mine,
is near an existing mine!*

Minimum \$3 million 2019 program with potential to increase to \$5 million - 30,000 meter drill program

2019 Exploration Program – Scenario #1

- \$3 million, including 14,000 metres drilling
- Expansion & new target drilling
- 7,000m diamond core & 7,000m RC drilling
- Ground IP and gravity geophysics
- Geochemistry – 2,000 soils & 600 rock samples
- Mapping

2019 Exploration Program – Scenario #2

- \$5 million, including 25,000 metres drilling
- Expansion & new target drilling
- 12,500m diamond core & 12,500m RC drilling
- Ground IP and gravity geophysics
- Geochemistry – 3,500 soils & 1,000 rock samples
- Mapping

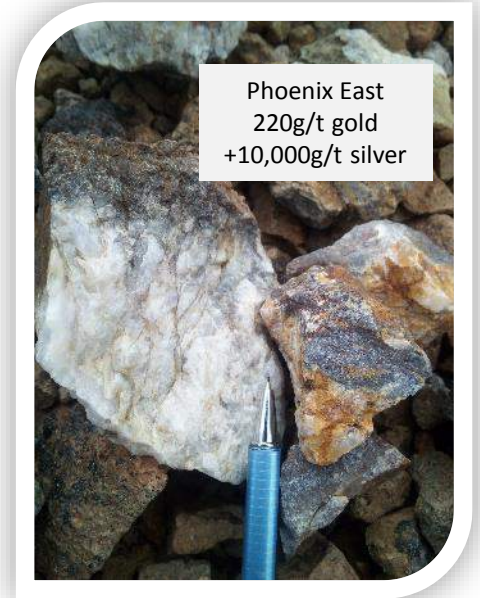
Milestones & Timelines

- Q1 2019 – financing completed
- Q2 2019 – project planning and targeting
- Q3 2019 – drill program focus on resource expansion and new discovery targets
- Q4 2019 – results and updated mineral resource estimate

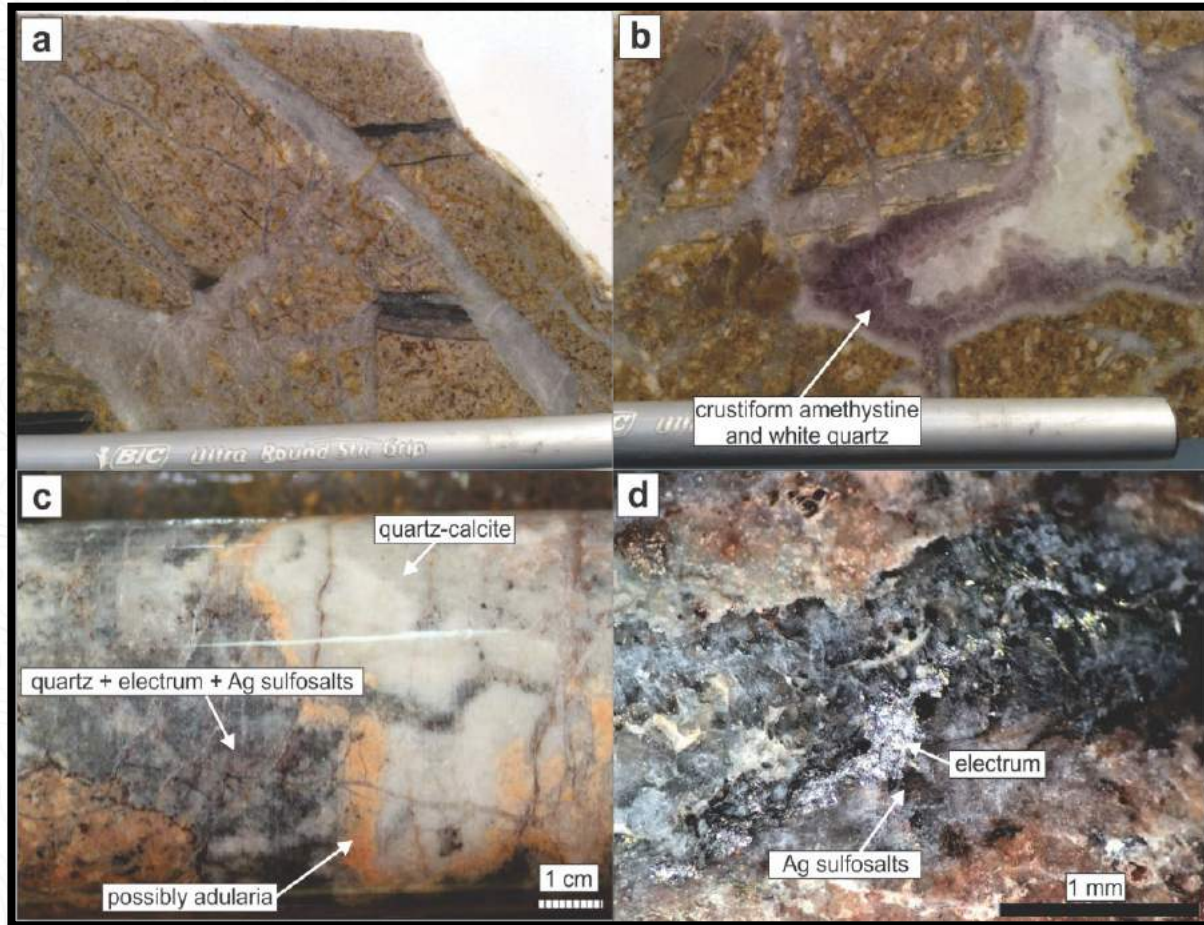
Lawyers Deal Structure

TERMS:

- **\$200,000 paid at signing**
 - 3 year earn-in agreement for 75% after \$9 million total spending
 - 51% after \$5 million
 - 60% after \$2.5 million
 - 75% after \$1.5 million
- 4 million shares over earn-in period
 - **1 million shares issued**
 - 2 millions shares at 51%
 - 1 million shares at 60%
- 2.5% NSR subject to buyout provision



Gold & Silver Mineralization



Phoenix Zone, 18PXD002 – drill core

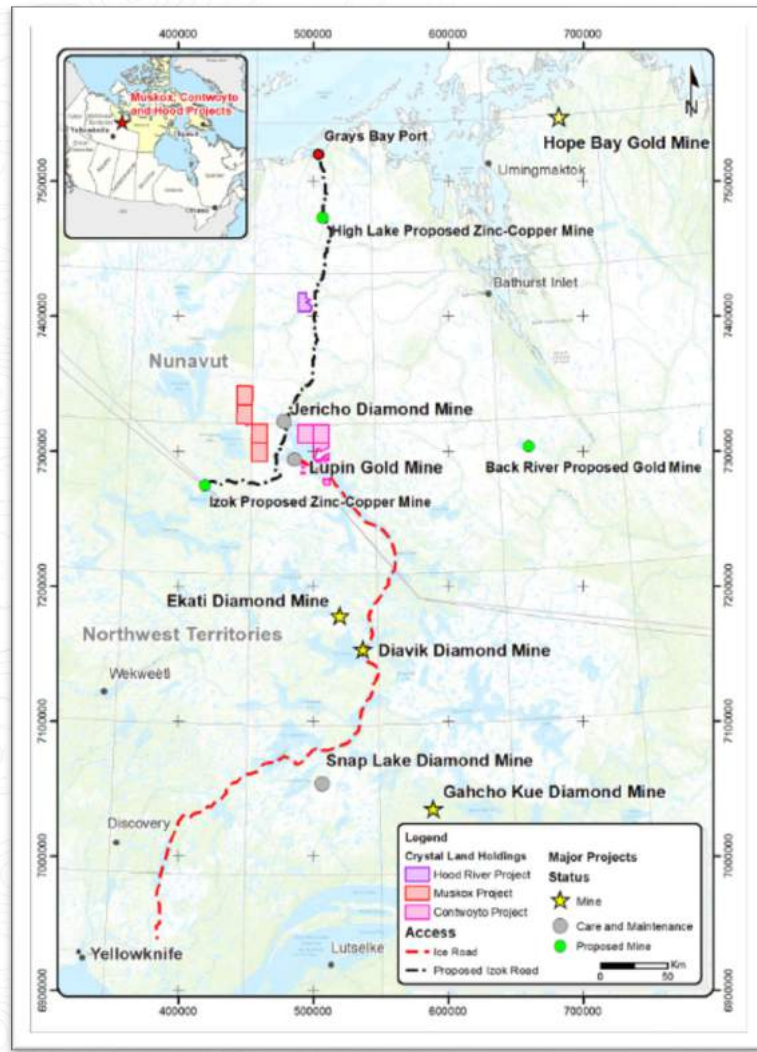
- 18.43 g/t Gold, 1,129g/t Silver over 1.81m



Cliff Creek Zone (CC-UG-07), rock grab sample

- 86.1g/t Gold, 9,855g/t Silver

Nunavut Projects to be Spun Out



Diamond & Gold Projects

- 100% owned in Nunavut, Canada
- Potential to establish new gold and diamond companies with shareholder equity ownership
- Contwoyto Gold project
 - 63g/t Au over 4.9m (DDH 97-13)*
 - 18 g/t Au across 3m (DDH17CEI-02)*
- Muskox & Contwoyto Diamond projects
 - Diamonds** recovered include 2.73 carats, 2.67 carats, 1.61 carats, 0.49 carats
- Prolific and proven gold & diamond region

*Source: SEDAR, Benchmarkmetals.com

**Source: SEDAR, Besserer 2016, NI43-101 Technical Report

CONTACT US



Jeremy Yaseniuk, Corporate Development



jeremy@bnchmetals.com



1.604.773.1467

Jim Greig, President



jimg@bnchmetals.com



1.778.788.2745

John Williamson, Chairman & CEO



johnw@bnchmetals.com



1.780.437.6624

Head Office

10545 45 Avenue NW
250 Southridge, Suite 300
Edmonton, Alberta
Canada T6H 4M9



LinkedIn/Benchmark Metals