

5 Million Gold equivalent ounce Exploration Target  
Gold & Silver



May 1, 2019

[BENCHMARKMETALS.COM](http://BENCHMARKMETALS.COM)

TSX/V : **BNCH** | OTCQB : **CYRTF** | WKN : **A2JM2X**

## Forward Looking Statements:

Certain statements and/or graphics in the Company's press releases, web site information and corporate displays, among others, constitute "forward-looking statements". These statements are based on information currently available to the Company and the Company provides no assurance that actual results will meet management's expectations. Forward-looking statements include estimates and statements that describe the Company's future plans, objectives or goals, including words to the effect that the Company or management expects a stated condition or result to occur. Forward-looking statements may be identified by terms such as "believes", "anticipates", "expects", "estimates", "may", "could", "would", "will", or "plan", or their conditional or future forms. Since forward-looking statements are based on assumptions and address future events and conditions, by their very nature they involve inherent risks and uncertainties.

Actual results relating to, among other things, results of exploration, project development, reclamation and capital costs of the Company's mineral properties, and the Company's financial condition and prospects, could differ materially from those currently anticipated in such statements for many reasons such as: changes in general economic conditions and conditions in the financial markets; changes in demand and prices for minerals; litigation, legislative, environmental and other judicial, regulatory, political and competitive developments; technological and operational difficulties encountered in connection with the activities of the Company; and other matters discussed in this presentation. This list is not exhaustive of the factors that may affect any of the Company's forward-looking statements. These and other factors should be considered carefully and readers should not place undue reliance on the Company's forward-looking statements. The Company does not undertake to update any forward looking statement that may be made from time to time by the Company or on its behalf, except if required to do so by applicable securities laws. You are cautioned not to place any undue reliance on any forward-looking statement.

## Forward Looking Statements or Information Related to Exploration:

Relating to exploration, the identification of exploration targets and any implied future investigation of such targets on the basis of specific geological, geochemical and geophysical evidence or trends are future-looking and subject to a variety of possible outcomes which may or may not include the discovery, or extension, or termination of mineralization. Further, areas around known mineralized intersections or surface showings may be marked by wording such as "open", "untested", "possible extension" or "exploration potential" or by symbols such as "?". Such wording or symbols should not be construed as a certainty that mineralization continues or that the character of mineralization (e.g. grade or thickness) will remain consistent from a known and measured data point. The key risks related to exploration in general are that chances of identifying economical reserves are extremely small.

The presentation contains historical exploration data that have not been verified by Benchmark Metals Inc. and may not be accurate or complete, and therefore the information should not be relied upon.

Michael Dufresne, M.Sc., P.Geol., P.Geo., an independent director of the Company, also serves as a Technical Advisor and is the Qualified Person, as defined by National Instrument 43-101, responsible for reviewing and approving the technical content of all materials publicly disclosed by Benchmark, including the contents of this website.



# BENCHMARK FACTSHEET



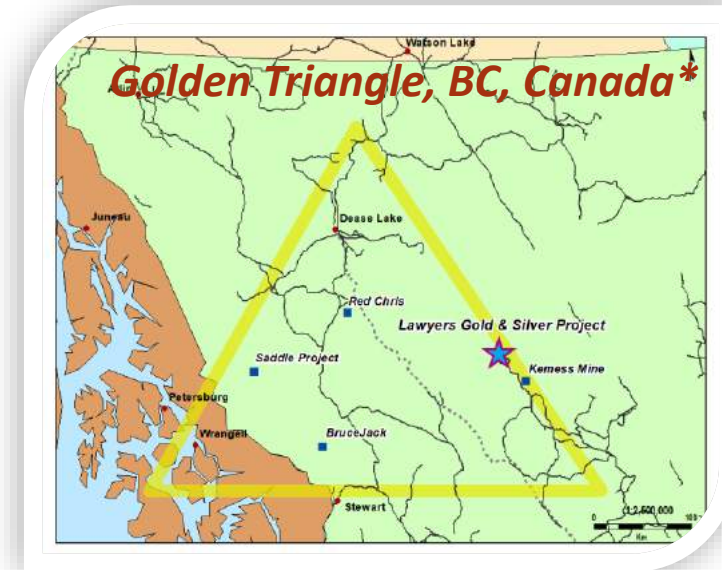
Share Structure as at Feb. 28, 2019		
Current Shares outstanding & market cap @ \$0.24	42.2 M	\$10.1 M
Estimated working capital		\$1.1 M
In the money warrants	17.2 M	\$3.9 M
In the money options	2.7 M	\$0.4 M
In the money diluted working capital		\$5.4 M
In the money diluted shares & market cap @ \$0.24	62.1 M	\$14.9 M
Fully diluted working capital		\$6.1 M
Out of the money options	64.2 M	\$15.4 M

## Key Facts

- ~\$50 million in existing infrastructure
- Projects in producing and prolific regions
- Experienced and proven management
- Lawyers Gold & Silver project in BC, Canada
- Gold & Diamond projects in Nunavut, Canada
- New companies to be formed with BNCH shareholder ownership for Nunavut assets



*The Golden Triangle Region is a Hotbed for Mineral Discovery\**

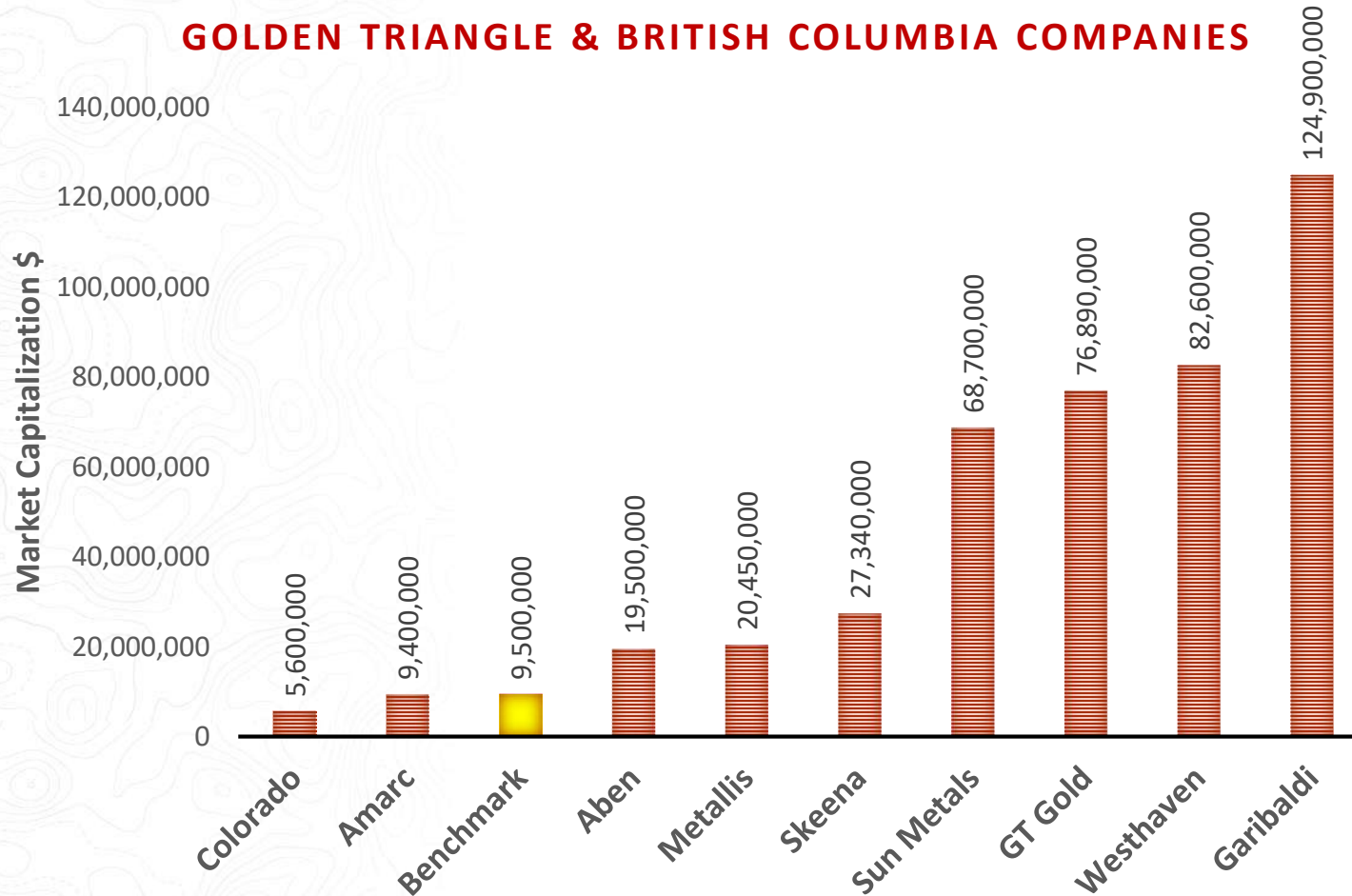


\* Source: <http://www.visualcapitalist.com/story-golden-triangle-british-columbia/>

# MARKET CAPITALIZATION COMPARABLES



## GOLDEN TRIANGLE & BRITISH COLUMBIA COMPANIES

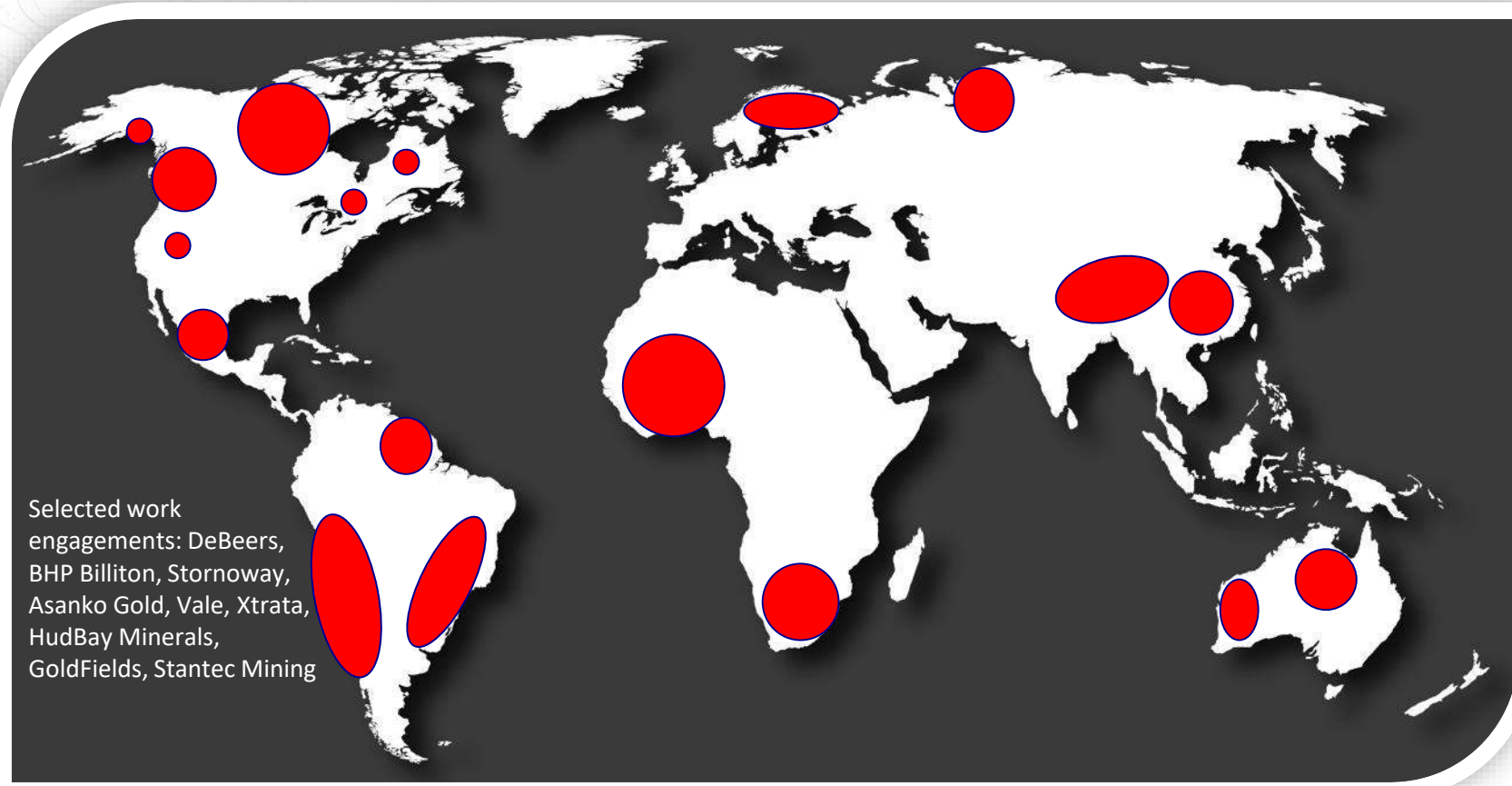


Market Capitalization levels at February 22, 2019

### Benchmark Market Cap Drivers

- Gold & Silver drill results
- Resource expansion
- New discoveries
- Land acquisitions
- Value opportunity with results

# EXPERIENCED TEAM



Selected work engagements: DeBeers, BHP Billiton, Stornoway, Asanko Gold, Vale, Xtrata, HudBay Minerals, GoldFields, Stantec Mining

## World-Class Team

- Global exploration, development & production experience
- Broad range of commodities & deposit types
- In-house technical team supported by solid project management
- Highly effective marketing team
- Cost efficiencies through shared infrastructure & professionals within the Metals Group
- Success through the discovery, development and production cycle

*Global jurisdictions with operational experience*

# EXPERIENCED TEAM – Management & Directors



## **John Williamson, P.Geol** – CEO & Chairman

+25 years mining sector, founder of more than 20 successful companies in Canada and around the globe

## **Jim Greig, MBA** – President & Director

+20 years mining sector, formerly Keegan Resources Ltd, exploration to production expertise

## **Sean Mager** – CFO & Director

+20 years mining sector, former CFO & COO at Brilliant Resources Ltd., regulatory & financial expertise

## **Jeremy Yaseniuk** – Corporate Development

+20 years in financial markets, Director at Altiplano Minerals Ltd, marketing & financial expertise

## **Toby Pierce, MBA** – Director

+20 years senior executive with public resource companies, former Banker at GMP Securities London

## **Michael Dufresne, M.SC., P.Geol., P.Geo.** – Director

+30 years mining sector, professional geologist at world-class mining projects and jurisdictions

## **Team**

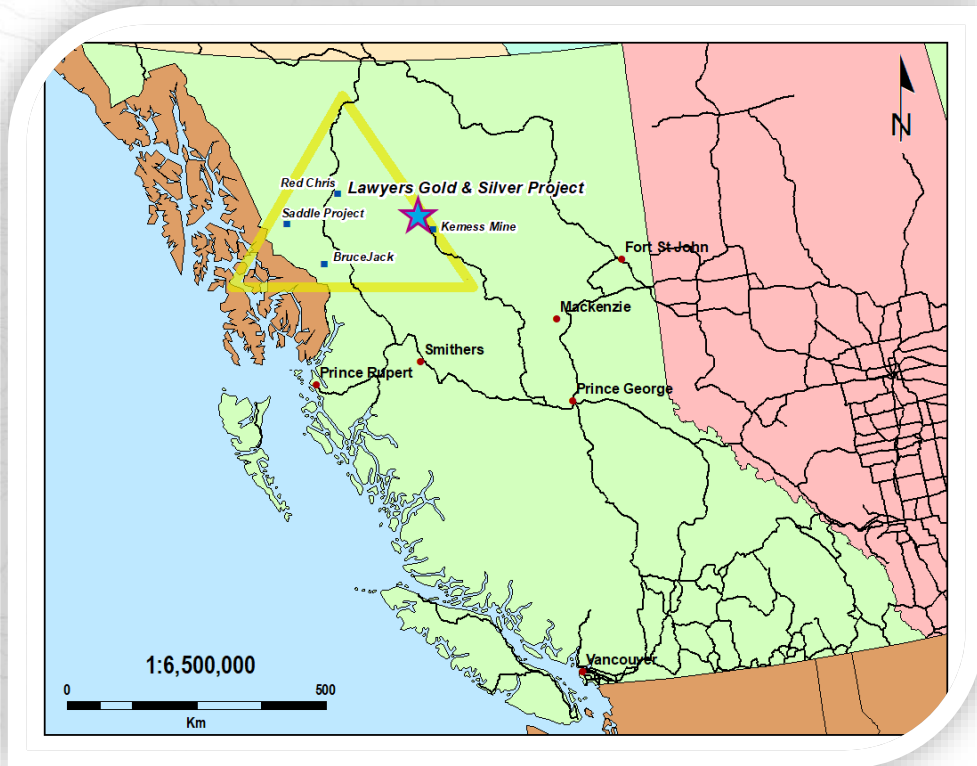
Collectively over *100 years* of mining experience

Management of over *25 public mining* companies delivering shareholder value

Raised in excess of *\$400 million* towards exploration, development & production



# GOLDEN TRIANGLE – Exploration to Production Success



## *The Golden Triangle Region is a Hotbed for Mineral Discovery*

Over **130 million oz. of gold**, **800 million oz. of silver** and **40 billion lbs of copper\*** have been found

The amazing part is that this is only scratching the surface of the region's ultimate potential

The Stikine terrane is home to BC's Golden Triangle

The highly prospective Toadoggone River area represents the eastern extent of the Stikine terrane and (is) possibly part of a larger, continuous mineral system\*\*

\* Source: <http://www.visualcapitalist.com/story-golden-triangle-british-columbia/>

\*\*Source: BC Geoscience, 2019

*Mines are Discovered and Permitted to Production  
in British Columbia, Canada*



# REDISCOVERING GOLD & SILVER



## Lawyers Gold & Silver Project, BC Canada

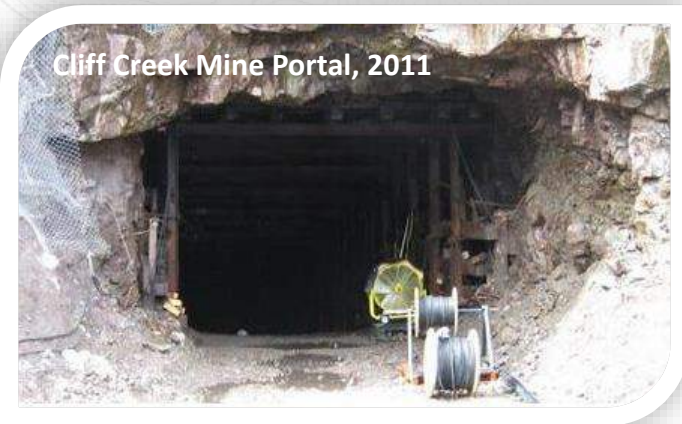
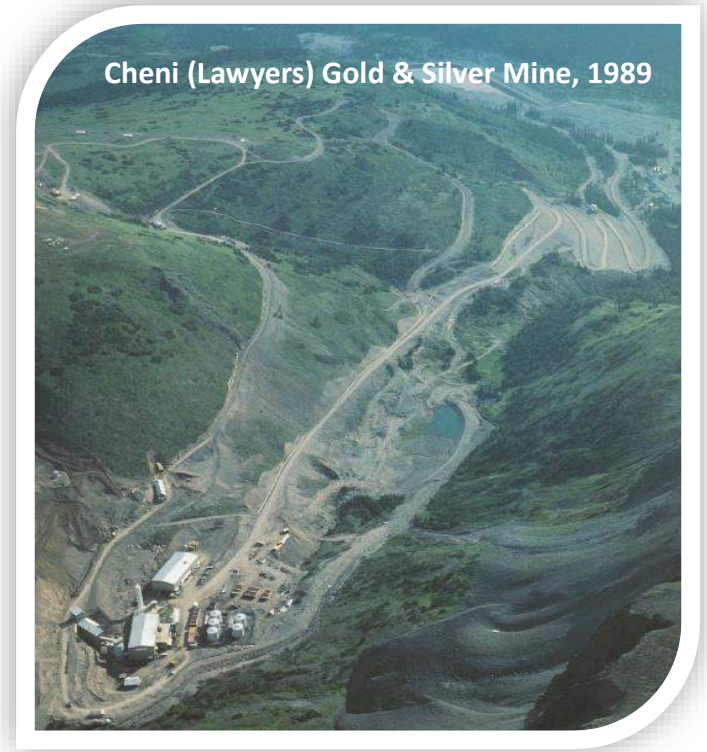
- 120km<sup>2</sup> gold & silver package with existing mine infrastructure
- Past producer of 171,000oz gold & 3.7 million oz silver\*
- Estimated ~\$50 million existing infrastructure
- Proven & profitable mining jurisdiction
- 11km from existing & permitted Baker Mill
- 45km Northwest of the Kemess Gold Copper Mine

## High-Grade Results

- 3.05m at 52g/t gold & 846g/t silver (DDH DRRC010, 2019 results)
- 2.4m at 87g/t gold & 2,407g/t silver (DDH CC15-15, P2 vein)

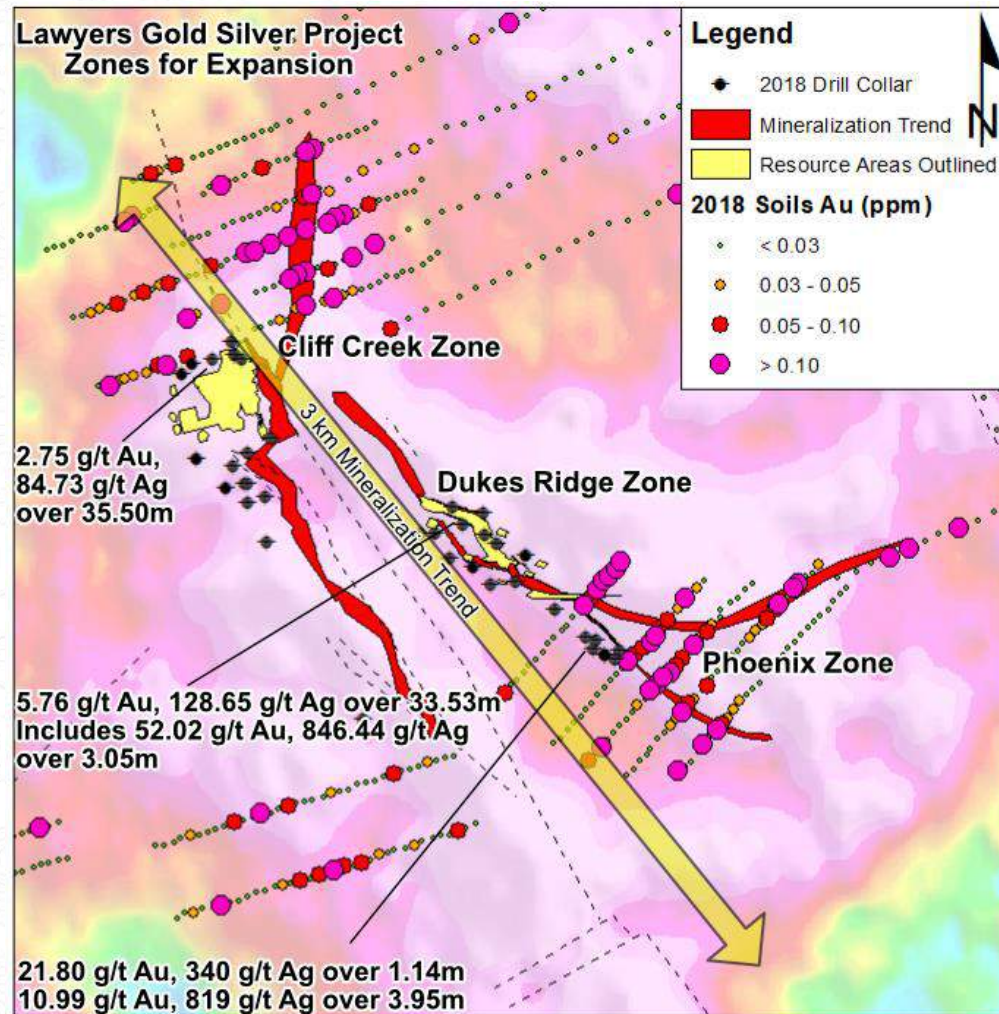
## Bulk-Tonnage Results

- 33.52m at 5.76g/t gold & 128.65g/t silver (2019 results)
- 36.5m at 2.68g/t gold & 82.57g/t silver (2018 results)
- 26m at 2.42g/t gold & 100.26g/t silver (2018 results)



\* Source: Benchmark NI43-101 Report, SEDAR, [Benchmarkmetals.com](http://Benchmarkmetals.com)

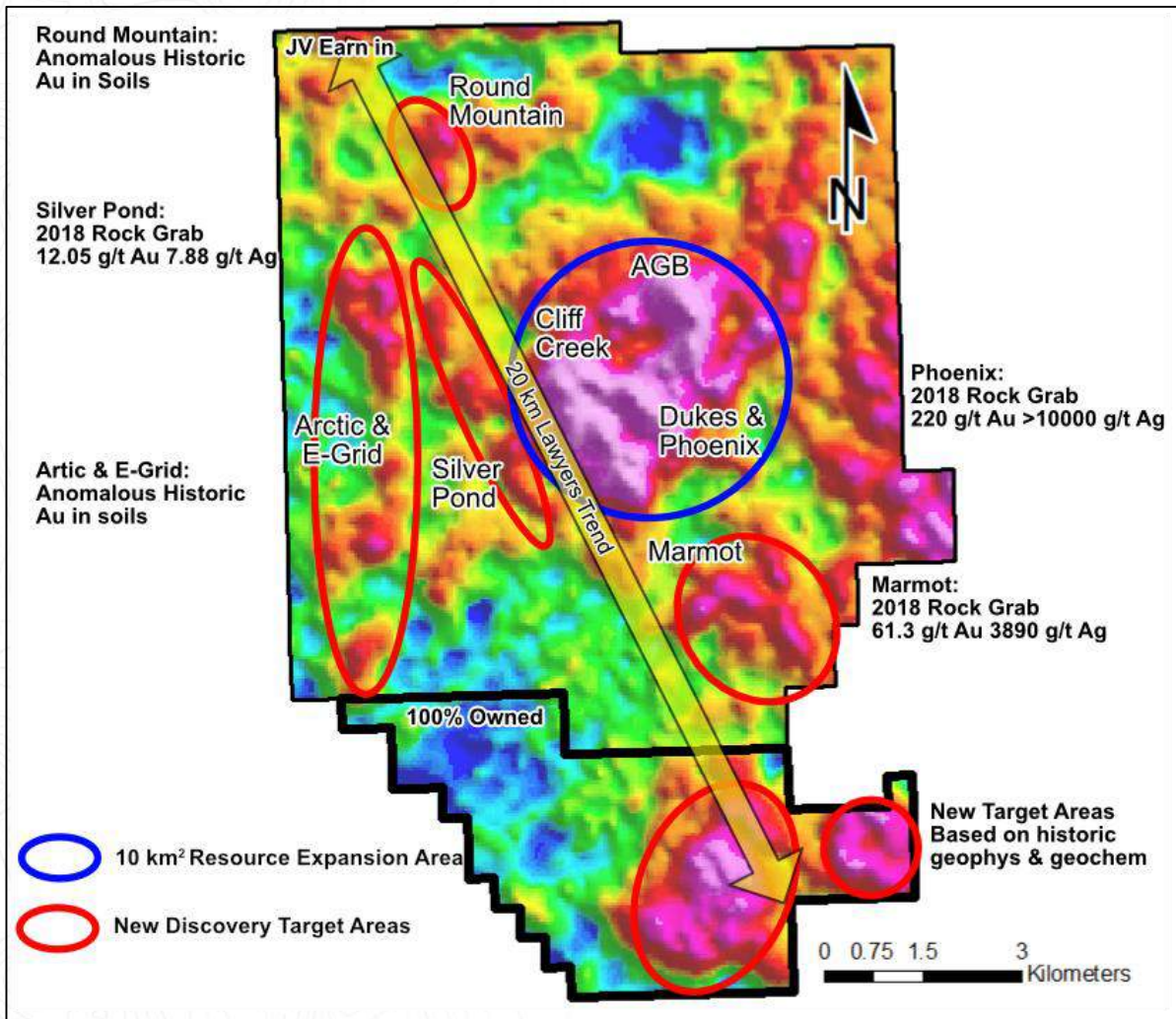




## Exploration Highlights

- New discoveries - Marmot and Phoenix East zones
- Expansion from step-out drilling in resources areas
- Resampling of historical drill-holes has generated bulk tonnage drill intercepts
- Resource expansion and new targets delineated by:
  1. Drilling
  2. Anomalous geochemistry
  3. Potassic alteration
  4. Radiometric geophysics
- High-grade drill intercepts within wider envelopes
- All zones open at strike and width
- Open at depth - average drill hole under 100m

# Drilling for Expansion and New Target Areas

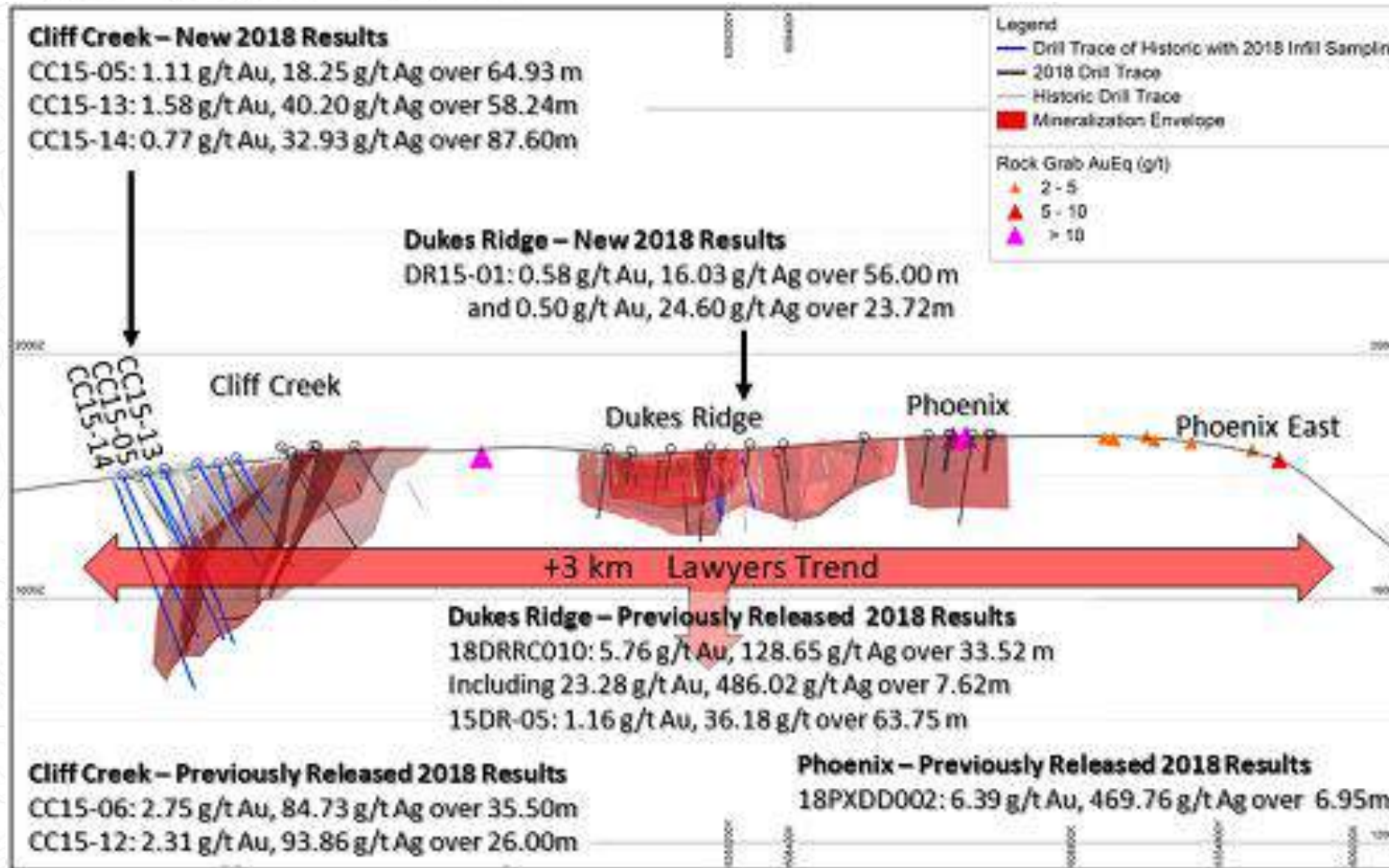


## Property-Wide Potential OPEN in ALL Directions

- 120km<sup>2</sup> land package is under-explored
- Cliff Creek to Phoenix zones contain the focus for resource expansions across the +10 km<sup>2</sup> area
- Resource expansion targeting high-grade and bulk-tonnage areas
  - **87 g/t gold and 2,407 g/t silver across 2.4 metres** in the Cliff Creek Zone
  - **5.76 g/t gold and 128.65 g/t silver across 33.52 metres** in the Dukes Ridge Zone
- 2018 + 2019 results to generate significant mineral resource estimate
- Potential for silver-gold zones to coalesce along strike and down-dip
- Multiple new discovery targets



# +3 km Resource Zone of Lawyers Trend



*Gold & Silver mineralization exists along the entire trend as confirmed by:*

- Soil samples
- Rock grab samples
- Magnetic geophysics
- Radiometric geophysics
- Drilling

Quasi Long Section



# Comparable Deposits & Geology



## Lawyers Project similarities - Patagonia Argentina, World-Class Gold-Silver Mines

- Mining began as narrow high-grade veins to bulk-tonnage operations
- Comparable scope and scale potential
- Epithermal precious metal deposits
- Same age rocks - Jurassic volcanics are key to precious metals deposition worldwide
- Low sulphidation with Quartz-Adularia-Kaolinite and Propylitic alteration



## Cerro Negro Gold-Silver Mine\*

- Open pit and multiple underground mines
- 2017 production: 452,000oz Au
- 2017 AISC at \$684oz
- 4.9M gold reserves + 1.2M measured & indicated gold
- 4,000tpd plant
- 96% Heap leach recovery

\*Source: [www.goldcorp.com/English/portfolio/operations/cerro-negro/default.aspx](http://www.goldcorp.com/English/portfolio/operations/cerro-negro/default.aspx)

## Cerro Vanguardia Gold-Silver Mine\*\*

- Multiple narrow high-grade veins in open pits and underground
- 2017 production: 283,000oz Au and 6.2M oz Ag
- 2017 total cash cost at \$522oz, AISC at \$772oz
- +3 million Au oz in reserves and resources after 20 years of operations
- 3,000tpd plant, 2017 production of 3.1Mt at 7.5g/t Au

\*\*Source: [www.aga-reports.com/17/op#2](http://www.aga-reports.com/17/op#2)

# Value Proposition



## Project & People

- Exploration Target of 5 million gold equivalent ounces
- +20 km Lawyers Trend indicated by geochemistry, surface sampling, alteration, geophysics and drilling
- +5,000m of 2018 results has extended Mineral Resource area
- New large high-priority targets identified
- Bulk tonnage drill intercepts from surface envelope high-grade gold-silver veins
- Land package increased from 99 km<sup>2</sup> to 120 km<sup>2</sup>
- \$50 million in infrastructure remains in-place
- Road accessible project in the Golden Triangle
- Management with over 100 years mining experience and includes near \$400 million financings
- Track record of advancing exploration projects through to production scenarios
- New company 'spinout' utilizing 100% owned Nunavut diamond & gold projects



*The best place to find a new mine,  
is near an existing mine!*

*30,000 meter drill program focussed on a 5 million oz AuEq Exploration Target*

## 2019 Exploration Program

- \$5 million, including 30,000 metres drilling
- Expansion & new target drilling
- 15,000m diamond core & 15,000m RC drilling
- Ground IP and gravity geophysics
- Geochemistry – 3,500 soils & 1,000 rock samples
- Mapping

## Milestones & Timelines

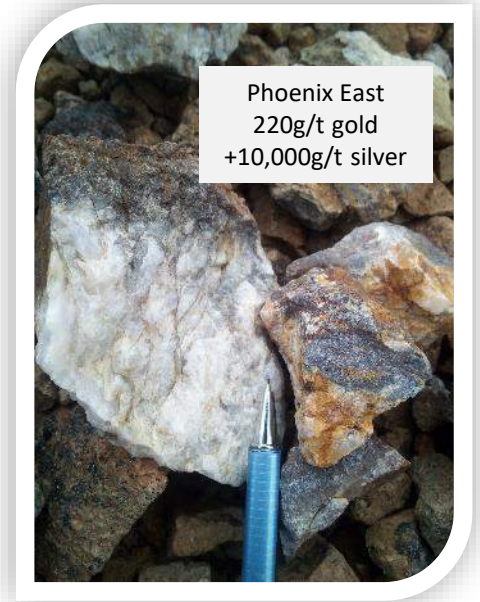
- Q2 2019 – financing completed
- Q2 2019 – project planning and targeting
- Q3 2019 – drill program focus on resource expansion and new discovery targets
- Q4 2019 – results and updated mineral resource estimate



# Lawyers Deal Structure

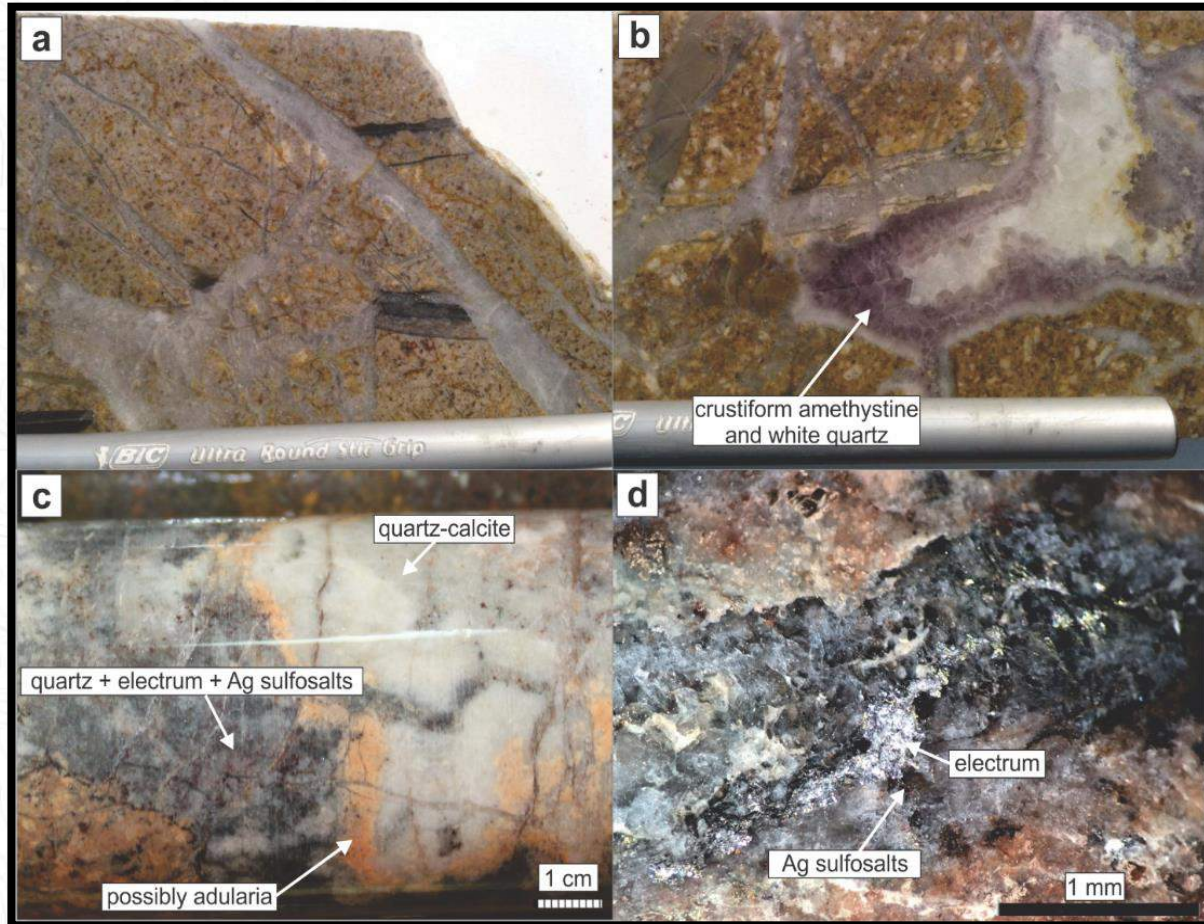
## TERMS:

- **\$200,000 paid at signing**
  - 3 year earn-in agreement for 75% after \$9 million total spending
  - 51% after \$5 million
  - 60% after \$2.5 million
  - 75% after \$1.5 million
- 4 million shares over earn-in period
  - **1 million shares issued**
  - 2 millions shares at 51%
  - 1 million shares at 60%
- 2.5% NSR if a party is diluted to 5% interest, subject to 1.25% buy-down for \$1 million





# Gold & Silver Mineralization



Phoenix Zone, 18PXD002 – drill core

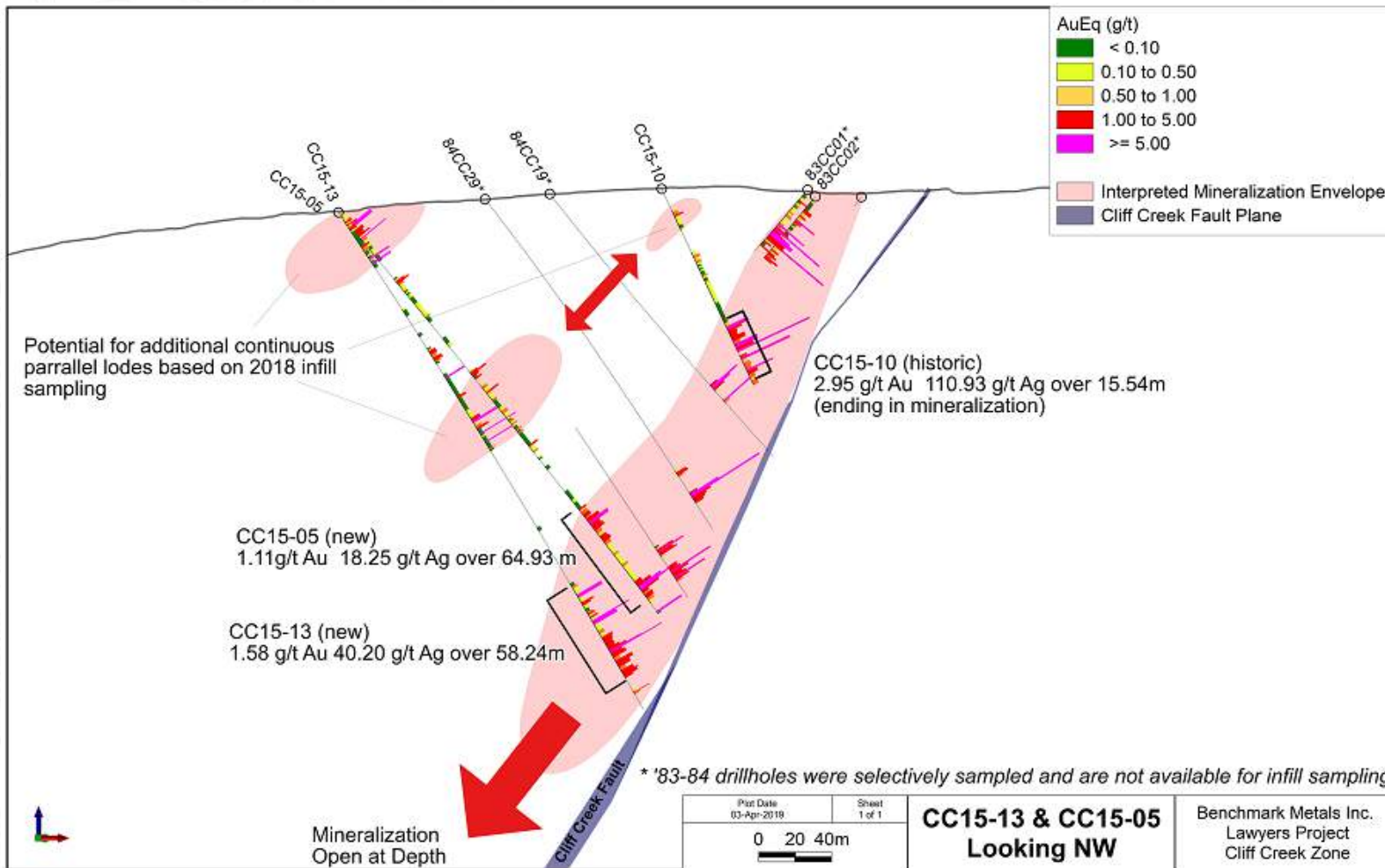
- 18.43 g/t Gold, 1,129g/t Silver over 1.81m



Cliff Creek Zone (CC-UG-07), rock grab sample

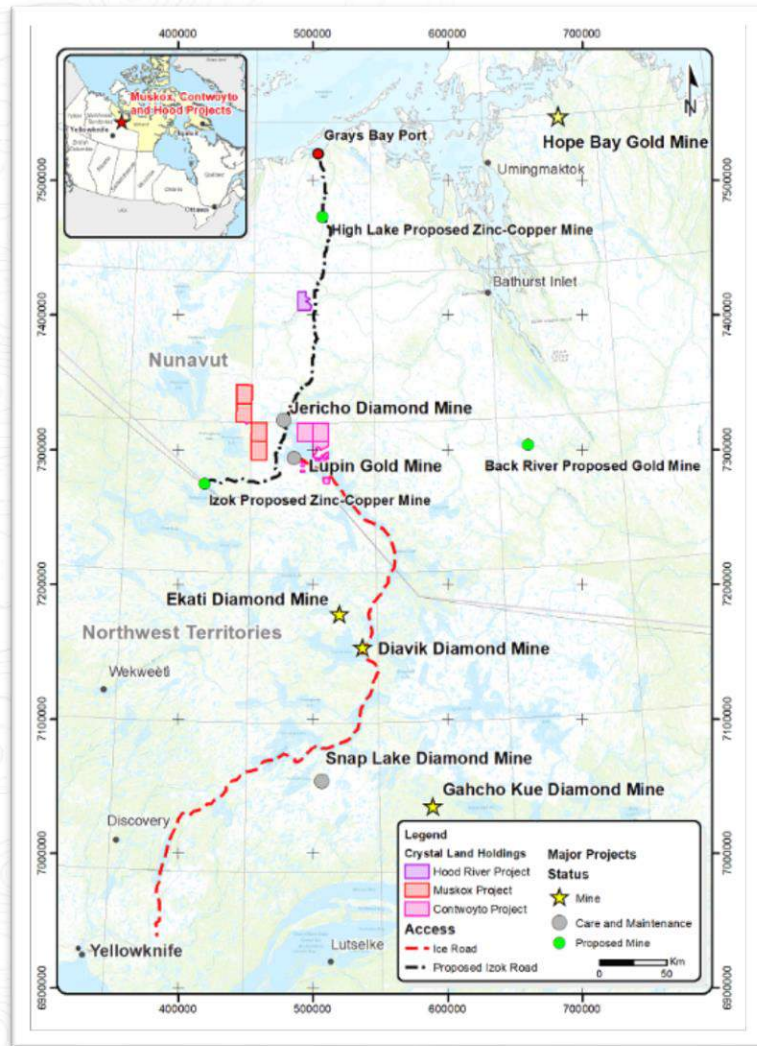
- 86.1g/t Gold, 9,855g/t Silver

# Open Zones at Depth, Width and on-Strike





# Nunavut Projects to be Spun Out



## Diamond & Gold Projects

- 100% owned in Nunavut, Canada
- Potential to establish new gold and diamond companies with shareholder equity ownership
- Contwoyto Gold project
  - 63g/t Au over 4.9m (DDH 97-13)\*
  - 18 g/t Au across 3m (DDH17CEI-02)\*
- Muskox & Contwoyto Diamond projects
  - Diamonds\*\* recovered include 2.73 carats, 2.67 carats, 1.61 carats, 0.49 carats
- Prolific and proven gold & diamond region

\*Source: SEDAR, [Benchmarkmetals.com](http://Benchmarkmetals.com)

\*\*Source: SEDAR, Besserer 2016, NI43-101 Technical Report

# CONTACT US



**Jeremy Yaseniuk, Corporate Development**



[jeremyy@bnchmetals.com](mailto:jeremyy@bnchmetals.com)



1.604.773.1467

**Jim Greig, President**



[jimg@bnchmetals.com](mailto:jimg@bnchmetals.com)



1.778.788.2745

**John Williamson, Chairman & CEO**



[johnw@bnchmetals.com](mailto:johnw@bnchmetals.com)



1.780.437.6624

## Head Office

10545 45 Avenue NW  
250 Southridge, Suite 300  
Edmonton, Alberta  
Canada T6H 4M9



LinkedIn/Benchmark Metals