

SPARTON RESOURCES INC.

# OAKES GOLD PROJECT MATACHEWAN ONTARIO

A UNIQUE GOLD EXPLORATION OPPORTUNITY



SIR HARRY OAKES

Contact:  
Lee Barker, President, Sparton Resources Inc.  
Tel: +1 416 716 5762  
Email: [info@spartonres.ca](mailto:info@spartonres.ca)  
Website: [www.spartonres.ca](http://www.spartonres.ca)

## Sir Harry Oakes - A Mining Legend

Harry Oakes circumnavigated the globe, following his dream of finding a gold mine. He worked in mining camps throughout the world before hitting the jackpot in Kirkland Lake, Ontario. He was able to retain direct ownership of the Lake Shore Mine, which became one of the most prolific gold producers in the world and Sir Harry Oakes became the richest man in the British Empire.

On September 23, 1911, Harry Oakes registered a transfer of claim L-1557 near Kirkland Lake. In July 1912, He staked mining claims L-2605 and 2606. He called the property the Lake Shore property.

The Lakeshore Mine produced almost 8.5 million ounces of gold from 1918 to 1965. The mill continued to operate for three years after the mine closed, re-milling tailings. At the time, the Lakeshore Mine was called “the Jewel Box of North America”, and Sir Harry received up to \$60,000 per month, providing him, in total, with more than \$3 Billion in today’s equivalency.

The exploration model that led to his discovery was quite simple: look for mineralized structures associated with porphyry type rocks, next to a body of water, with the gold veins running under the lake. Based upon this simple model, in the mid-1930’s, he went on to stake a separate group of claims in Matachewan, Ontario., Between 1934 and 1936, limited exploration work was carried out on the property before Sir Harry left Canada and subsequently died. Records show that gold was successfully intersected in 3 drill holes and a shallow shaft, marked on a rudimentary map, which has been located. The property has seen very limited exploration in the past 80 years.

Sparton Resources recently optioned the property and has since expanded the land position around what it has named the Sir Harry Oakes Project. It has prepared an enhanced exploration program, using modern geological and geophysical techniques, to complete the testing of the model. It truly is: “Following in the foot-steps of a legend.”

# HOW DID SPARTON OBTAIN THIS UNIQUE PROPERTY? WHY HAS THERE ONLY BEEN LIMITED EXPLORATION?



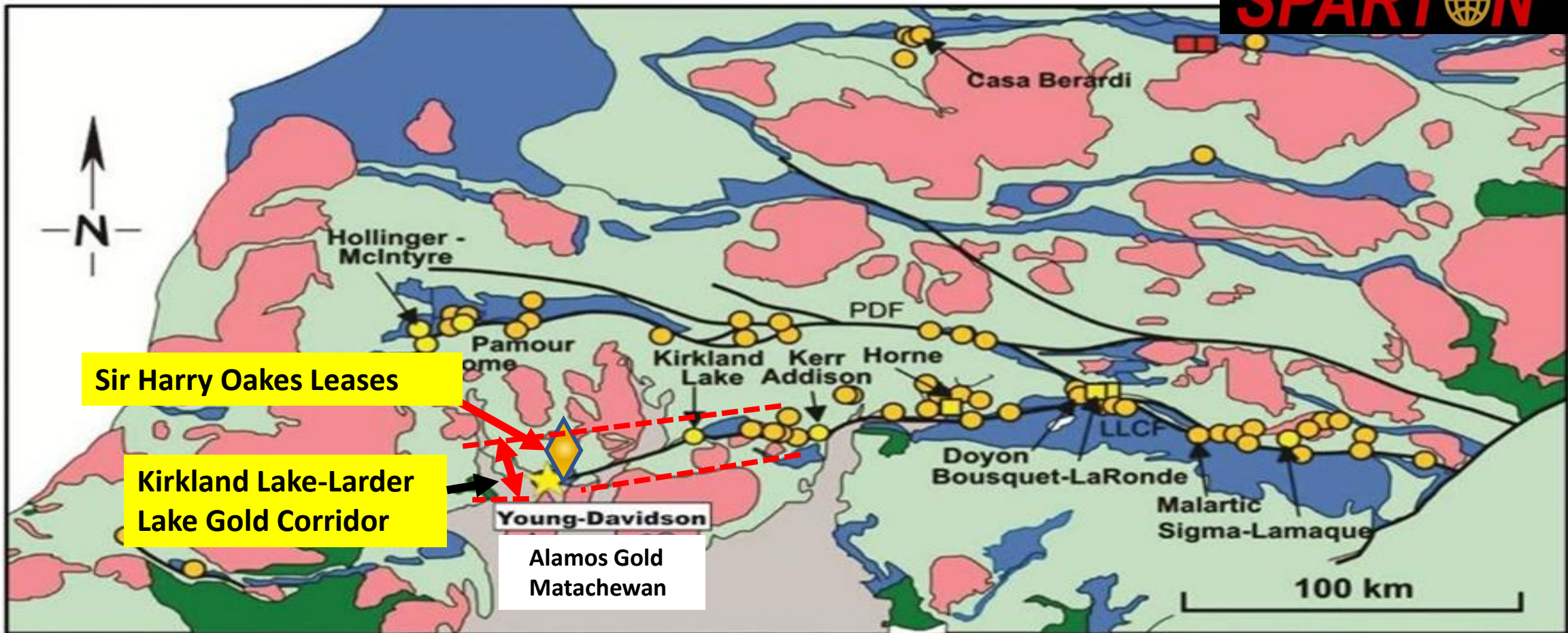
## LOCATION

The Oakes Project is situated within the world's most prolific gold producing area, on the extension of the Kirkland-Larder Lake Gold Structural System. The nearby Alamos Gold's Young Davidson Gold Mine, is currently producing 200,000 ounces gold per annum.

## BACKGROUND

The Oakes Property consists of 3 privately owned Mining Leases, originally explored by Harry Oakes. He supported extensive work on the property but with the financial success his Lakeshore Mine in Kirkland Lake , he elected to leave Canada for tax reasons. Oakes maintained ownership of the leases and they were eventually acquired by a colleague from the Oakes estate. Another private individual brought the leases and brought the opportunity to the attention of Sparton's President, Lee Barker, who, after seeing the historic data , instantly recognized its potential.











Subsequently, 600 hectares of adjacent claims were acquired or staked around the leases.



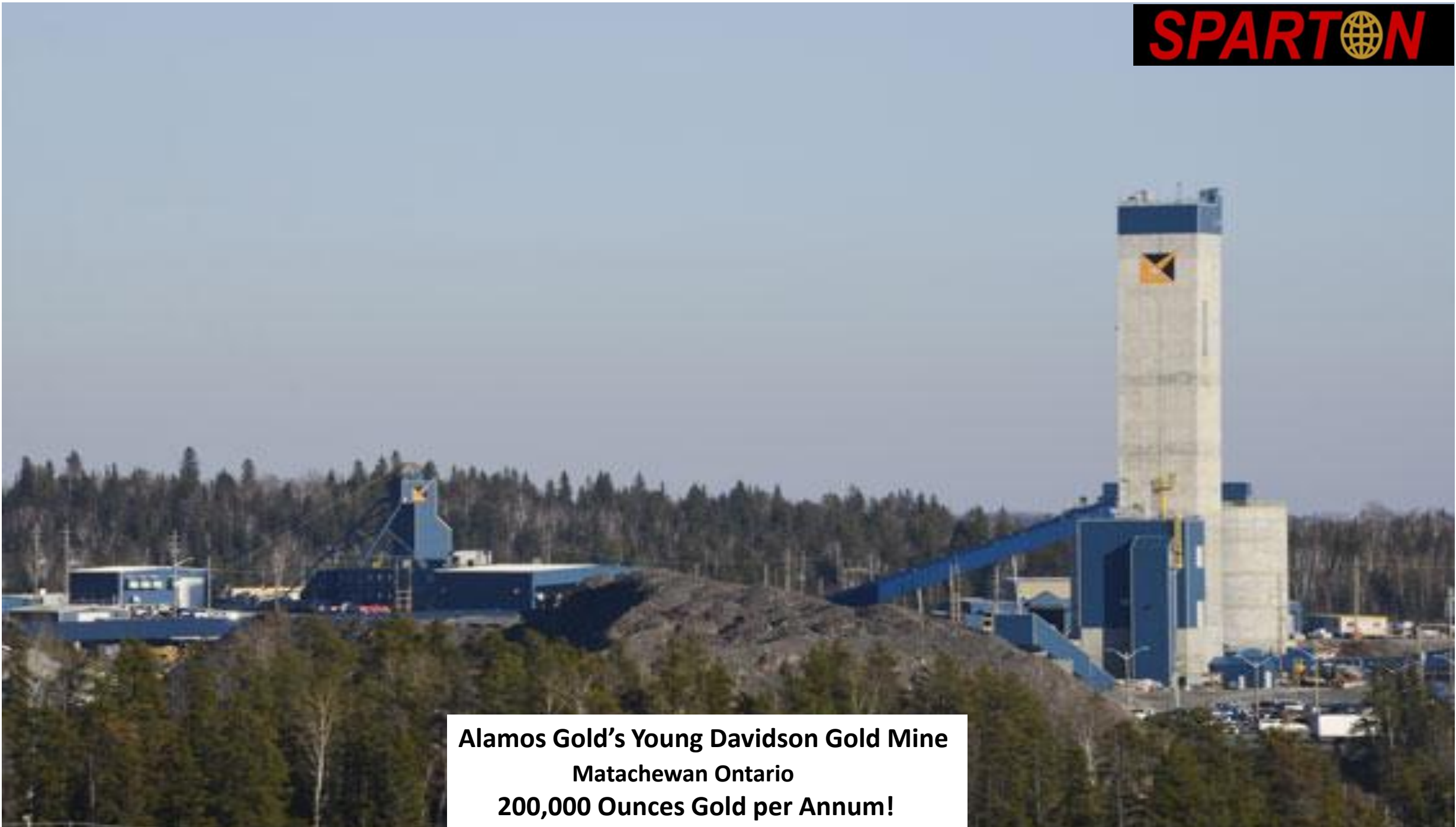
Sir Harry Oakes Leases

Kirkland Lake-Larder Lake Gold Corridor

Young-Davidson  
Alamos Gold  
Matachewan

	Granitoid rock		Proterozoic cover		World-class orogenic gold deposits		Other gold deposits
	Mafic intrusion		Sedimentary rock		World-class gold-rich volcanogenic massive-sulfides	LLCF	Larder Lake - Cadillac Fault Zone
	Volcanic rock		Major fault		Other gold-rich VMS	PDF	Pocupine - Destor Fault Zone

Regional Gold Deposits and Structures Val D'Or, Kirkland Lake and Timmins Gold Camps



**Alamos Gold's Young Davidson Gold Mine  
Matachewan Ontario  
200,000 Ounces Gold per Annum!**

**MATACHEWAN GOLD AREA  
50 KM SOUTHWEST  
OF KIRKLAND LAKE**



**OAKES GOLD PROJECT  
Location**

**Sir Harry Oakes  
Leases, Shaft  
and Gold Trend**

**KIRKLAND LAKE- LARDER LAKE  
STRUCTURAL ZONE WITH OVER  
30 MILLION OUNCES GOLD  
PRODUCTION**

**Sparton Claim Area  
Red Boundary**

**Alamos Gold's  
Young Davidson Mine  
200,000 OUNCES  
GOLD ANNUALLY!**

**Kirkland Lake ~45km**

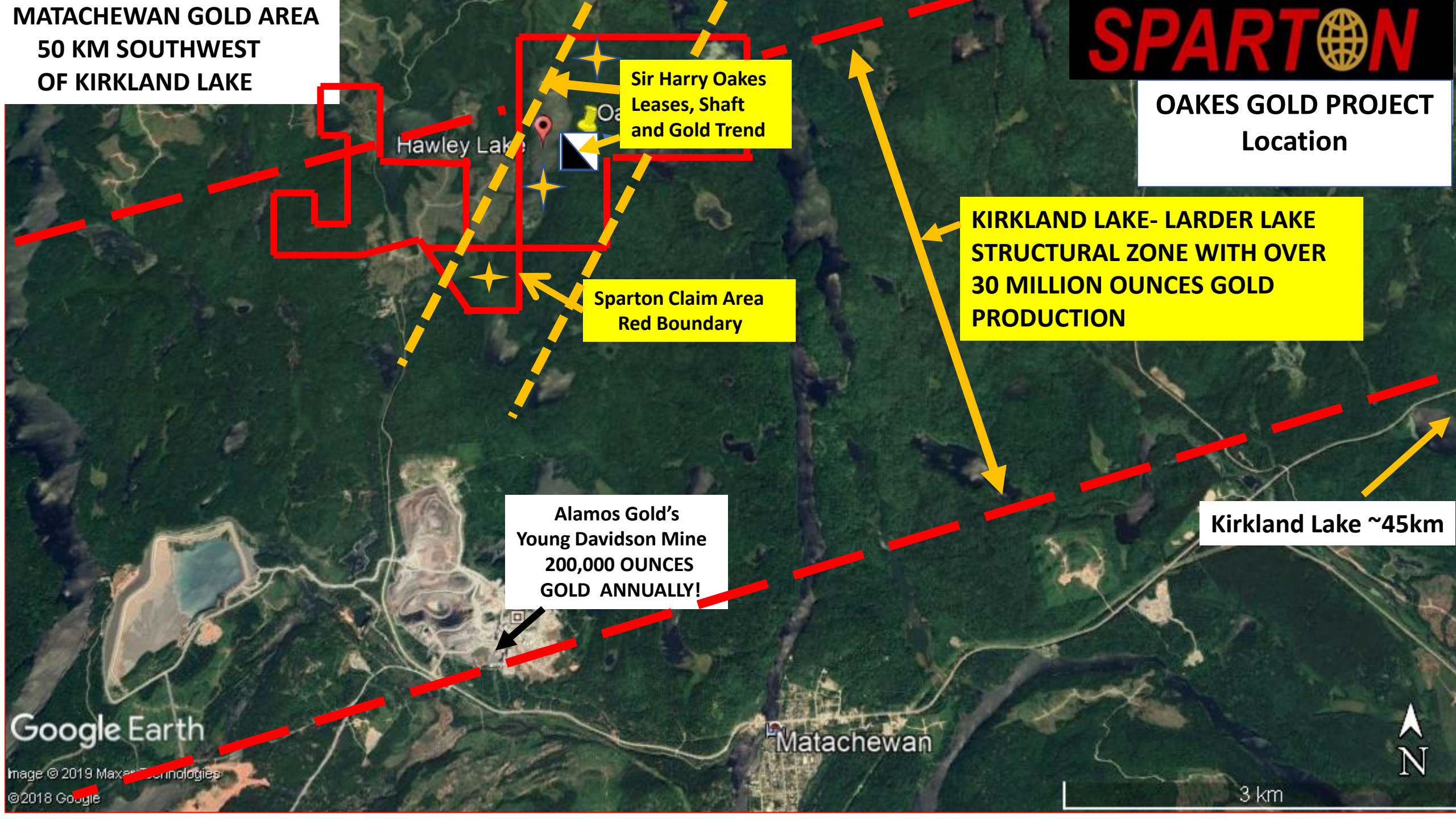
Google Earth

Image © 2019 Maxar Technologies  
© 2018 Google

Matachewan



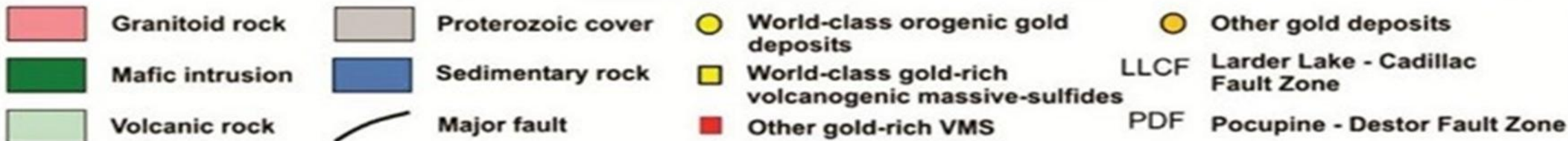
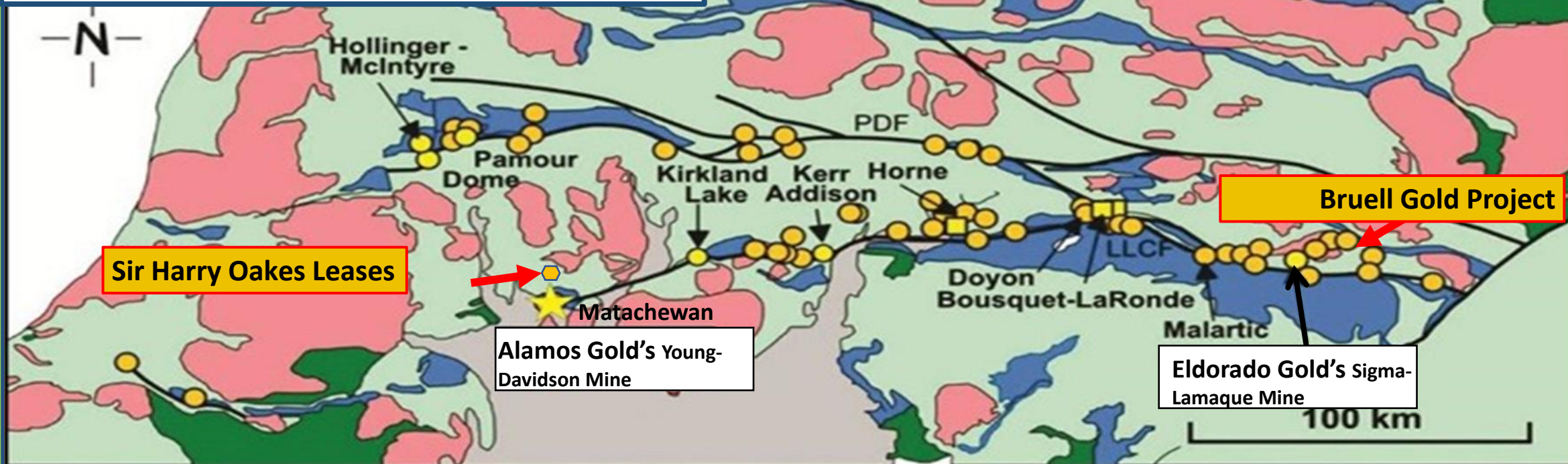
3 km

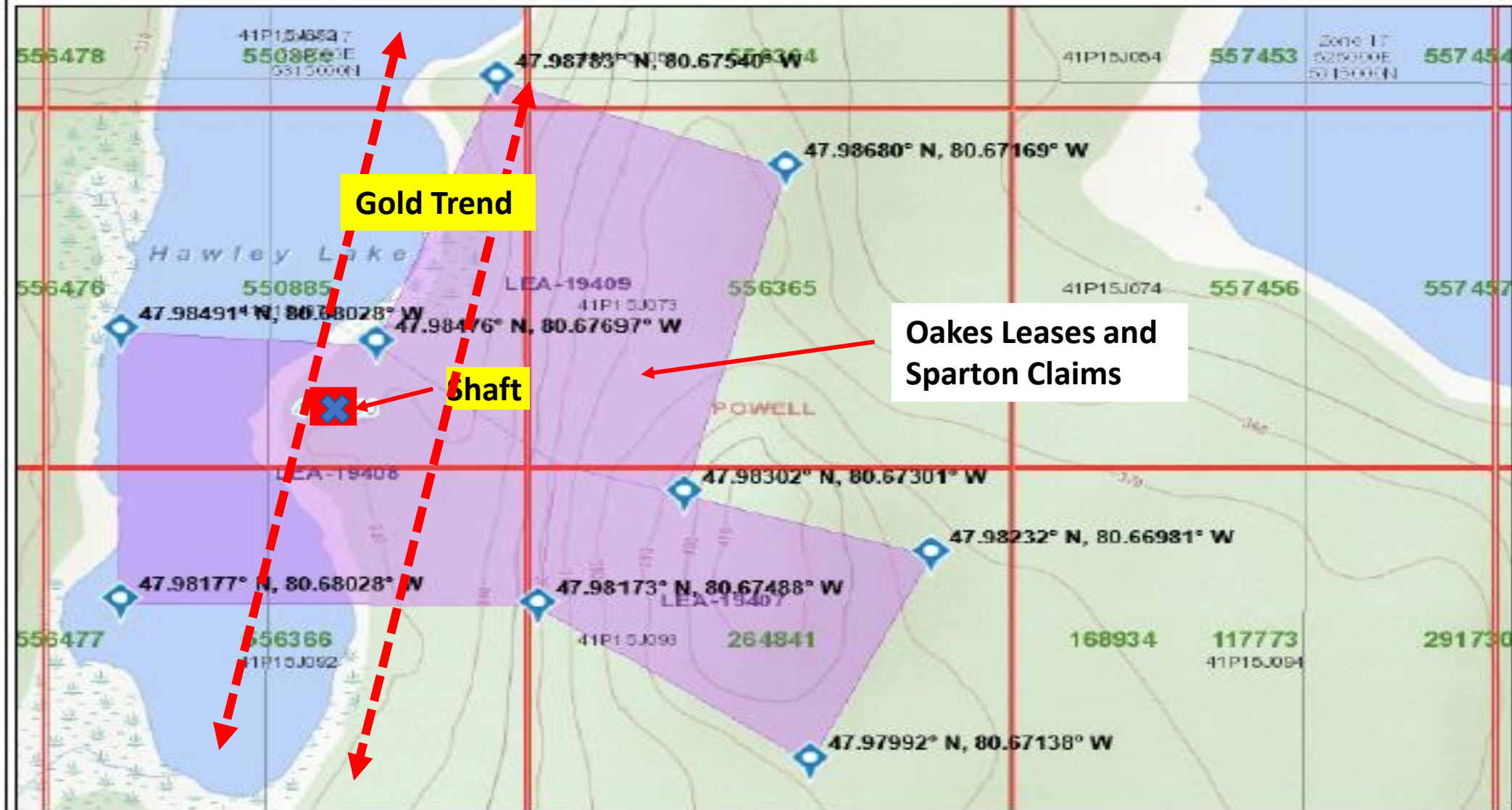


## REGIONAL GOLD DEPOSITS

Val d'Or , Kirkland Lake, Timmins, Matachewan  
Areas

 Sparton's Projects





Projection: Web Mercator



The Ontario Ministry of Northern Development and Mines shall not be liable in any way for the use of, or reliance upon, this map or any information on this map. This map should not be used for: navigation, a plan of survey, routes, nor locations.

Imagery Copyright Notices: Ontario Ministry of Natural Resources and Forestry; NASA Landsat Program; First Base Solutions Inc.; Aero-Photo (1961) Inc.; DigitalGlobe Inc.; U.S. Geological Survey.





WELCOME TO BEAUTIFUL  
BIENVENUE A  
Matachewan

NDCDC  
SIGN DESIGN

## PAST LIMITED EXPLORATION CURRENT EXPLORATION OPPORTUNITY



### HISTORICAL WORK

A shallow shaft was sunk, and 3 good drill holes completed.

Follow up work ceased when Oakes left Canada and was subsequently murdered.

There is no public data record of the results of Oakes' work.

Only minimal work has been done since mid 1930's with the property in private ownership.

### CURRENT DRILLING OPPORTUNITY

Drill ready, little work needed to directly follow up Oakes' results.

First Nations Consultations and permitting nearly completed.

2020 Budget: ~ \$400,000 includes 2000 meters drilling and aerial magnetic survey.

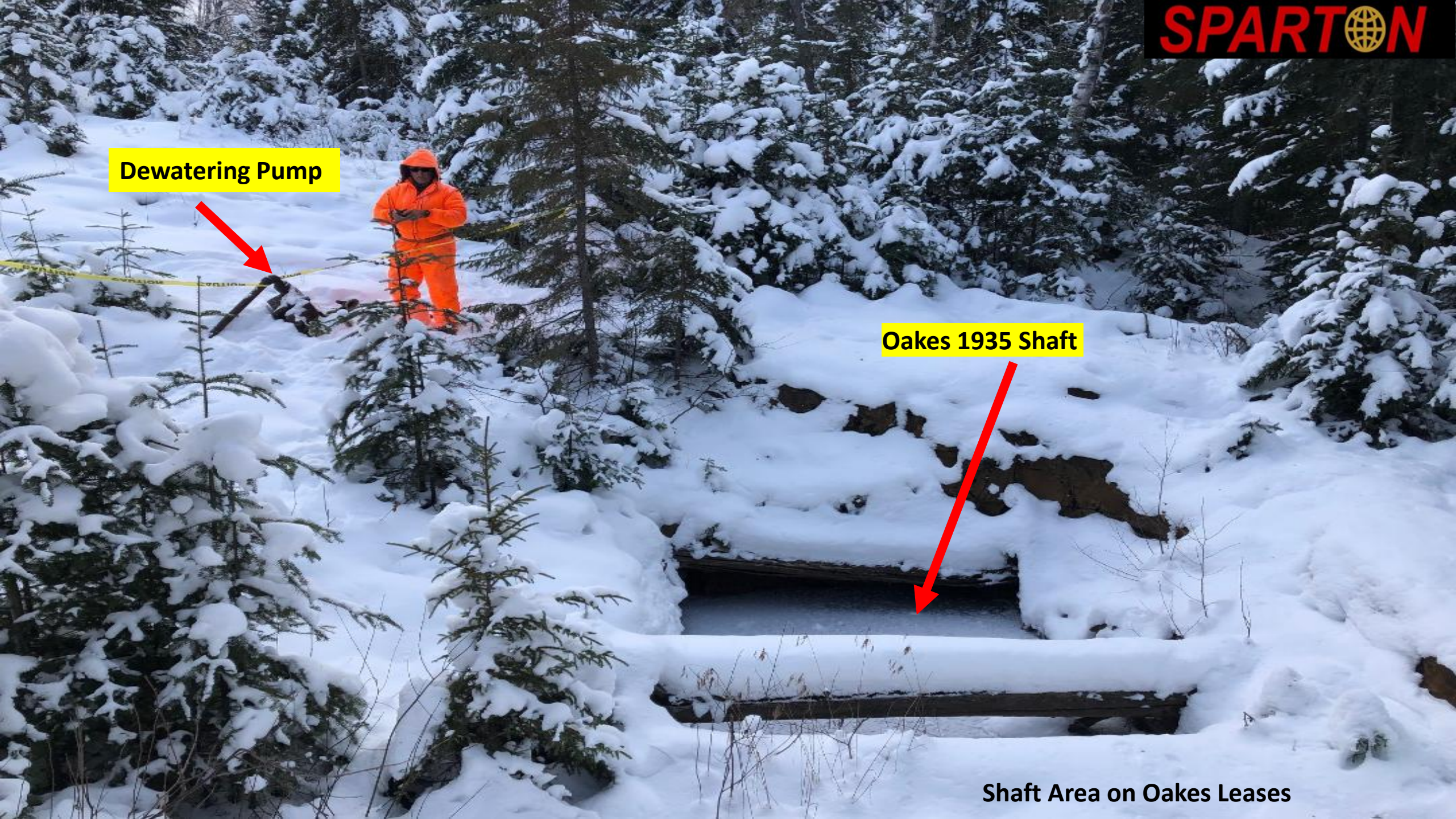
**Dewatering Pump**



**Oakes 1935 Shaft**



**Shaft Area on Oakes Leases**



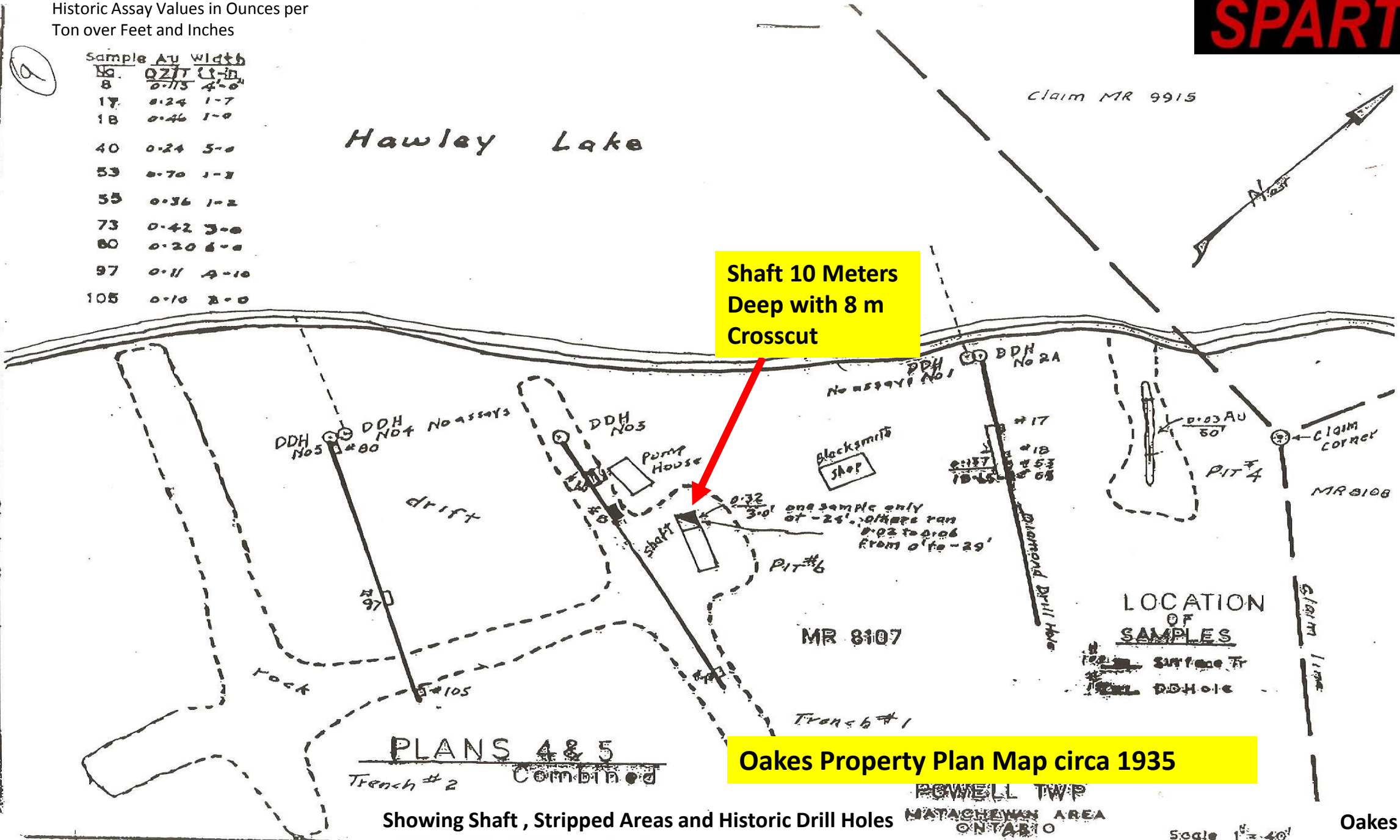
Historic Assay Values in Ounces per Ton over Feet and Inches



Sample No.	Au width	ft-in
8	0.217	4'-0"
17	0.24	1'-7"
18	0.46	1'-0"
40	0.24	5'-0"
53	0.70	1'-3"
55	0.36	1'-2"
73	0.42	3'-0"
80	0.20	6'-0"
97	0.11	4'-10"
105	0.10	2'-0"

Hawley Lake

Shaft 10 Meters Deep with 8 m Crosscut



PLANS 4 & 5  
Trench # 2 COMBINED

Oakes Property Plan Map circa 1935

Showing Shaft, Stripped Areas and Historic Drill Holes

POWELL TWP  
METCHEWIN AREA  
ONTARIO

Scale 1" = 40'

Oakes Project  
Matachewan Ontario

Oakes Mine  
Shaft Circa 1935

Gold Trend

1.0 g/t over 15 meters in Trench

5.2 g/t over 5.6 meters

9.1 g/t over 1.5 meters & 15.8 g/t over 0.9 meters

3.8 g/t over 0.65 meters

4.2 g/t over 1.5 meters

7.55 g/t over 1.85 meters

PIT 4

DDH 2A

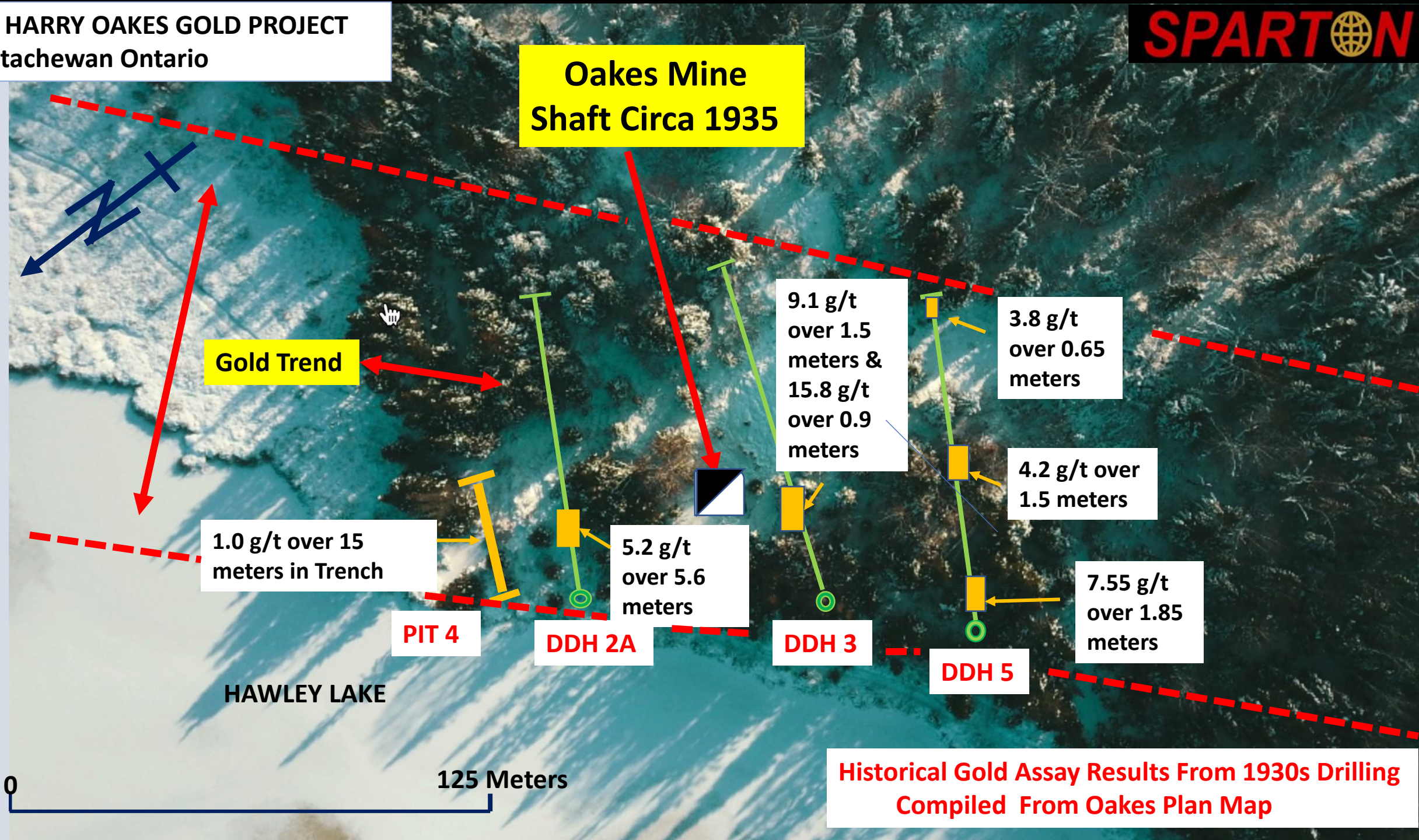
DDH 3

DDH 5

HAWLEY LAKE

0 125 Meters

Historical Gold Assay Results From 1930s Drilling  
Compiled From Oakes Plan Map



1930's Map Oakes Shaft Area and  
2020 Proposed Drill Hole Locations  
Total 2000 meters

(a)

Sample No.	Au width	Grain Size
8	0.15	4-0
17	0.24	1-7
18	0.46	1-0
40	0.24	5-0
53	0.70	1-3
55	0.36	1-2
73	0.42	3-0
80	0.20	6-0
97	0.11	4-10
105	0.10	2

Hawley Lake

Areas for Cleaning  
of Trenches and Pits

LEA19409

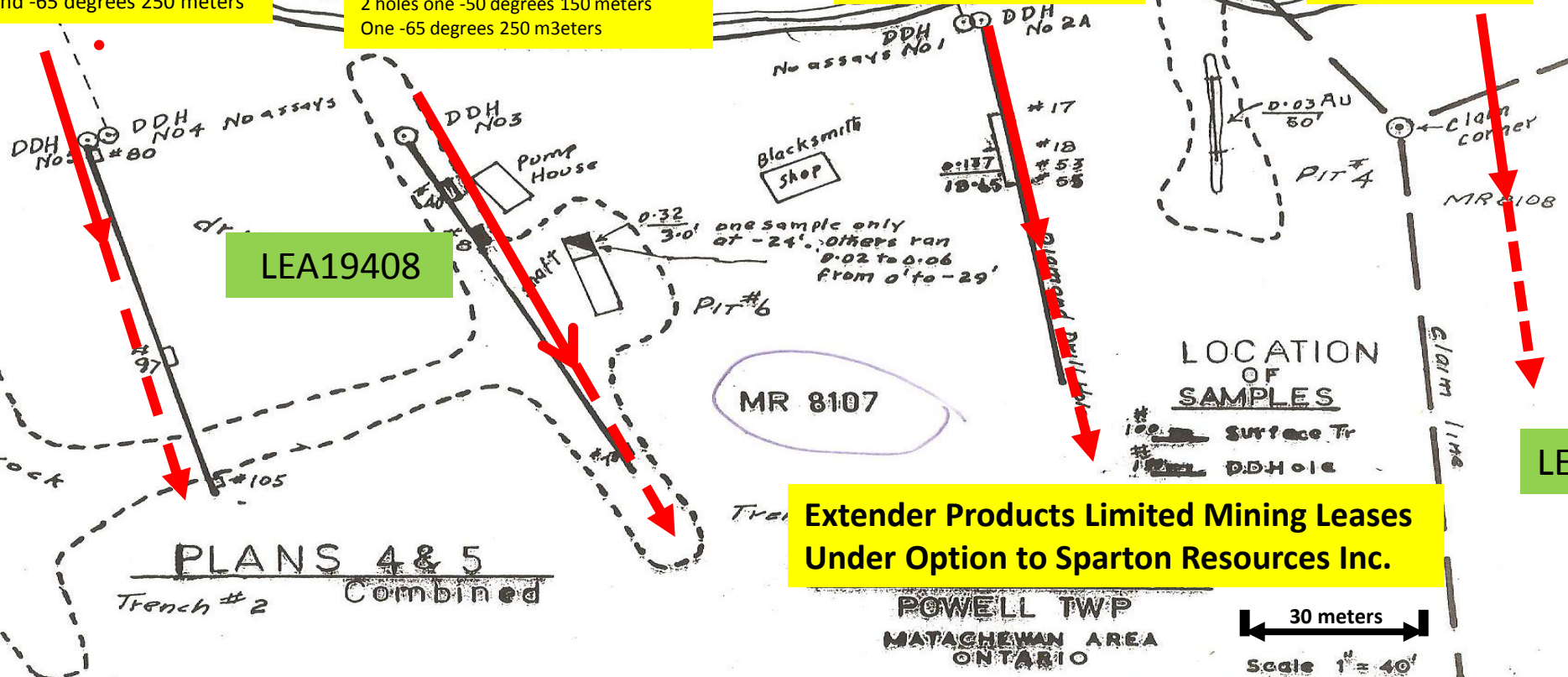
2 holes one -50 deg 150  
meters one -65 deg 250  
meters

2 holes one -50 deg 150 meters  
One -65 deg 250 meters

2 holes one -50 degrees 150 meters  
One -65 degrees 250 meters

2 holes one -50 deg 150 meters  
Second -65 degrees 250 meters

2 holes one -50 deg 150  
meters  
One -65 deg 250 meters



LEA19408

Extender Products Limited Mining Leases  
Under Option to Sparton Resources Inc.

LEA19407



**Mineralized Quartz Veins in  
Porphyry, Oakes Shaft Area**

0

1.0 M

Timmins 135 km

Oakes Shaft

Oakes Project Access Trails

Hawley Lake

Drone Launch Site

End of 4Wheeler Trail

ATV Access Trail

566

(Start)

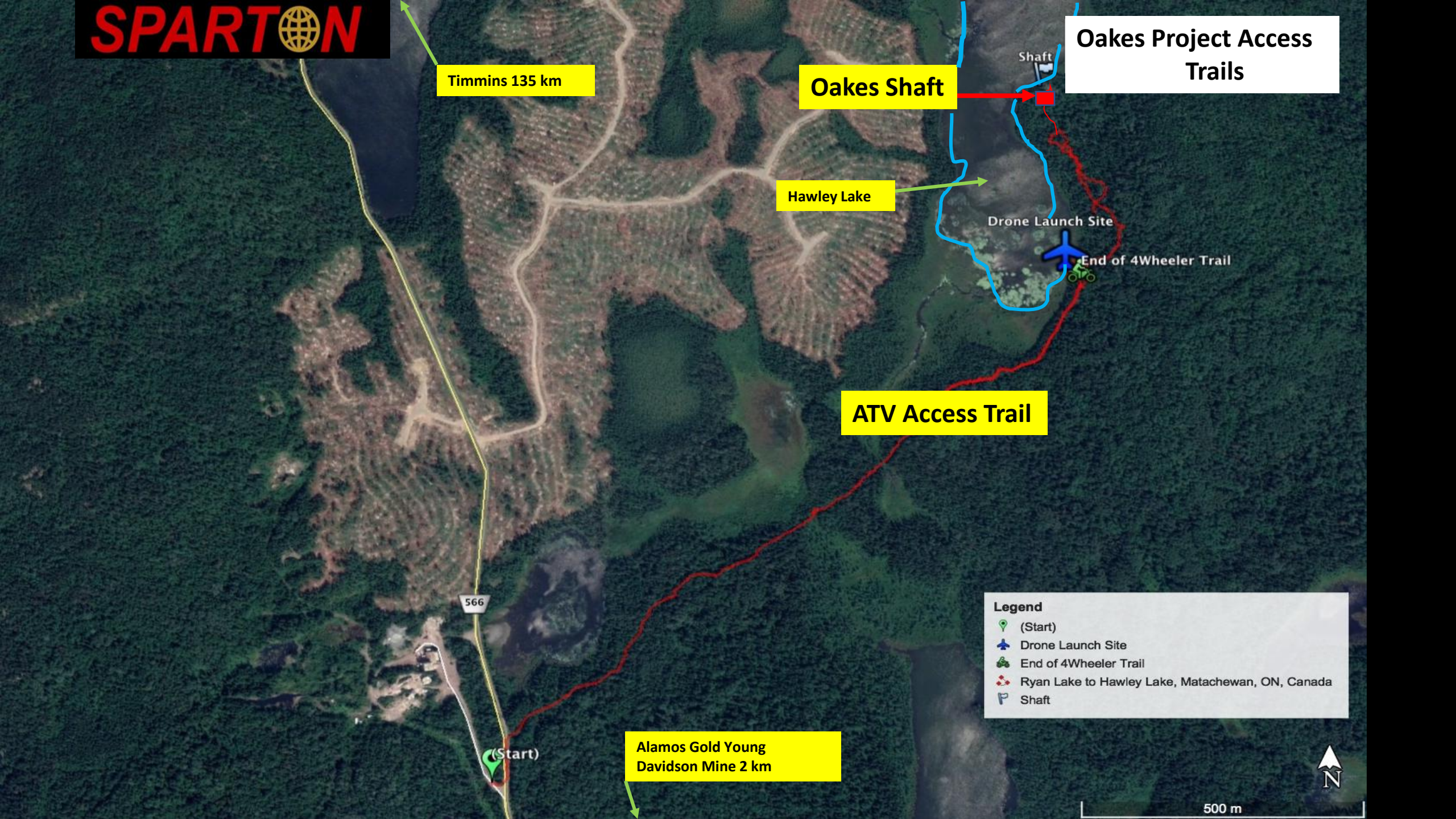
Alamos Gold Young Davidson Mine 2 km

**Legend**

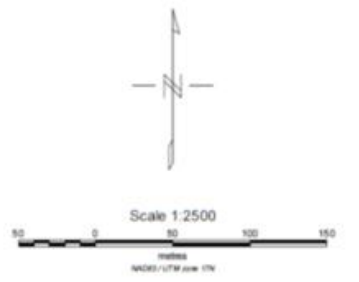
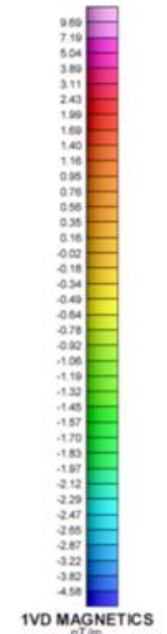
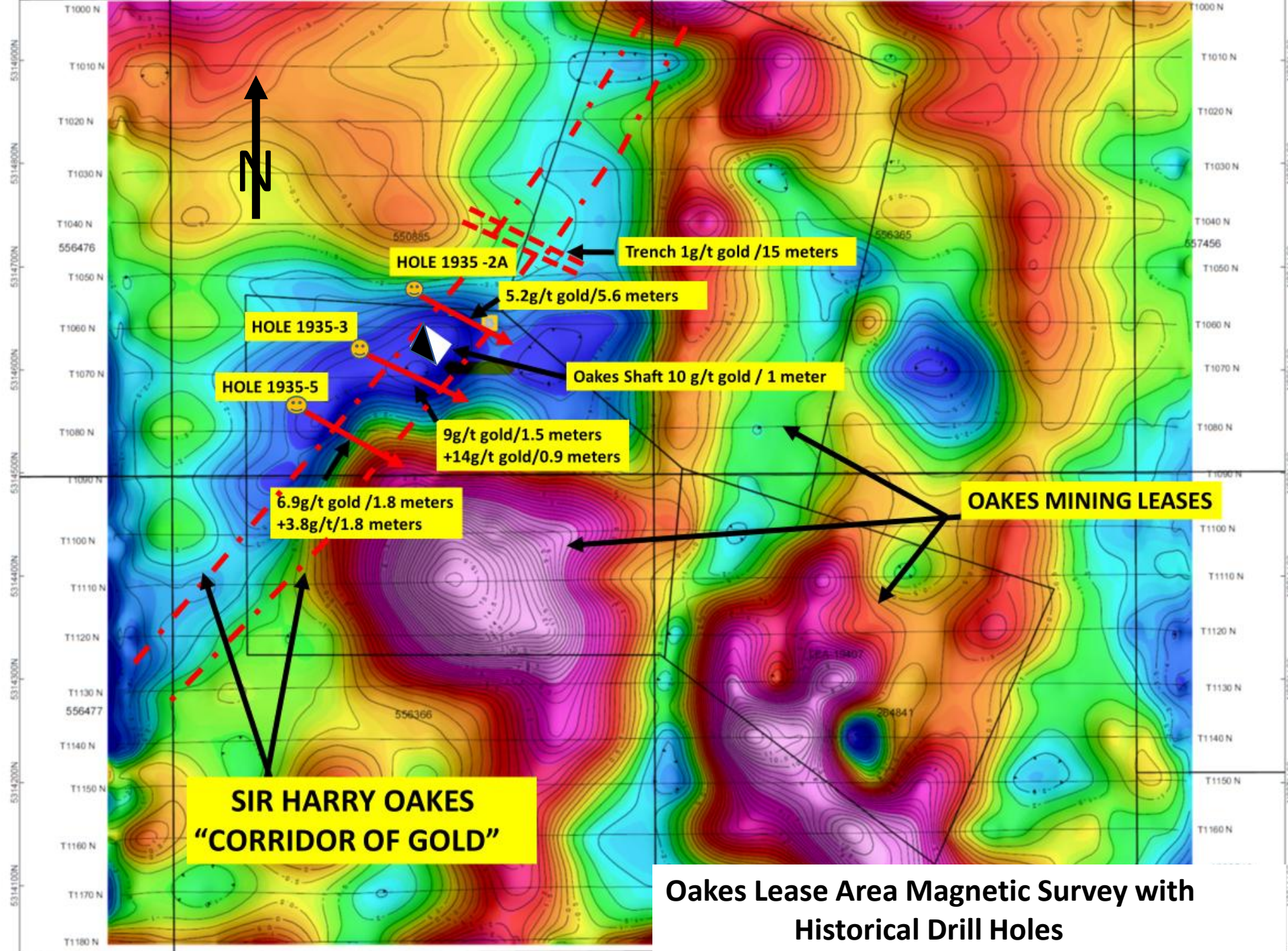
- (Start)
- Drone Launch Site
- End of 4Wheeler Trail
- Ryan Lake to Hawley Lake, Matachewan, ON, Canada
- Shaft



500 m



**Oakes Project  
ATV Access Trail  
to Oakes Leases**



**Oakes Lease Area Magnetic Survey with  
Historical Drill Holes**